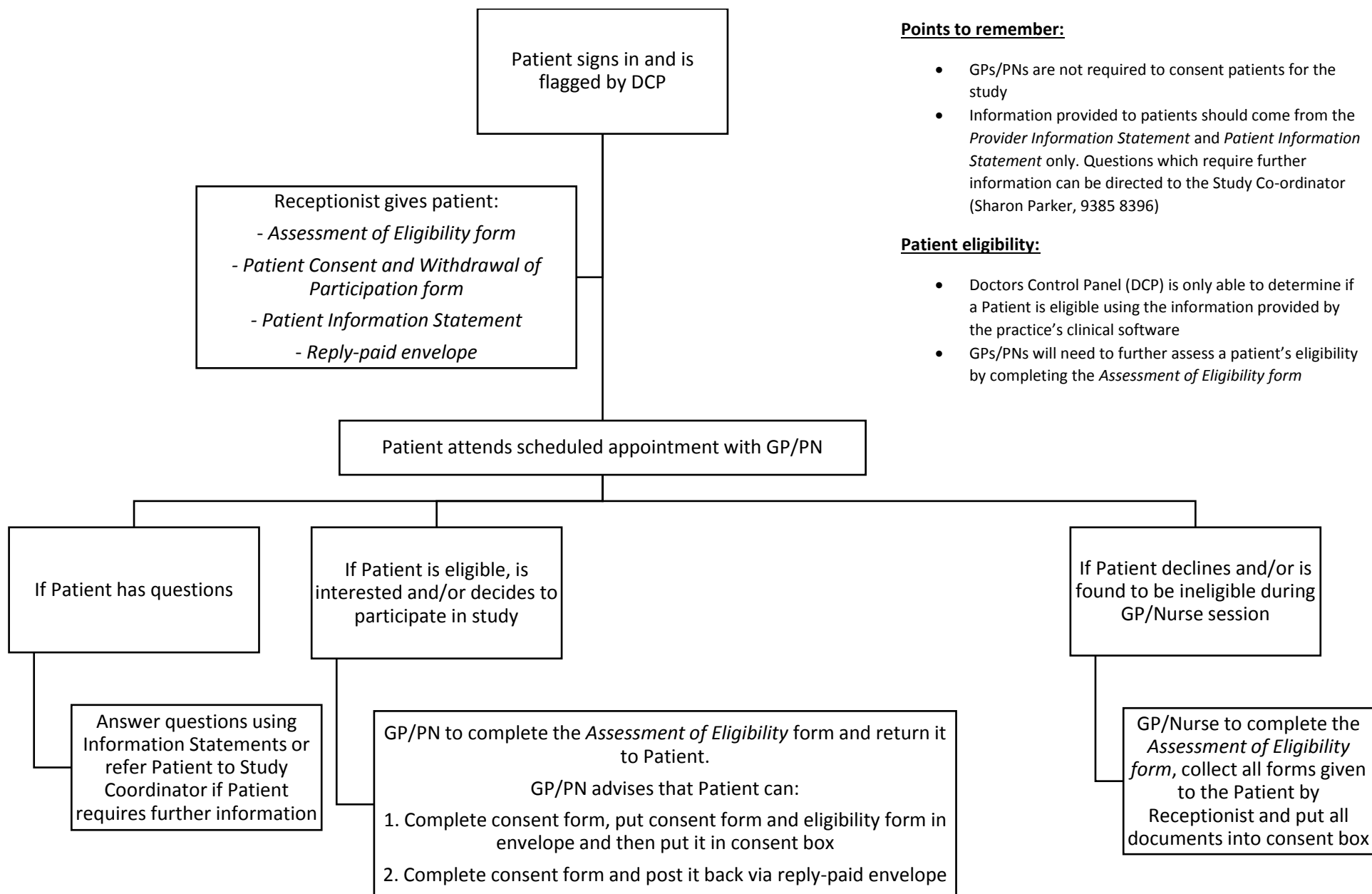


Flowchart for GPs and PNs – patient recruitment



Points to remember:

- GPs/PNs are not required to consent patients for the study
- Information provided to patients should come from the *Provider Information Statement* and *Patient Information Statement* only. Questions which require further information can be directed to the Study Co-ordinator (Sharon Parker, 9385 8396)

Patient eligibility:

- Doctors Control Panel (DCP) is only able to determine if a Patient is eligible using the information provided by the practice's clinical software
- GPs/PNs will need to further assess a patient's eligibility by completing the *Assessment of Eligibility form*