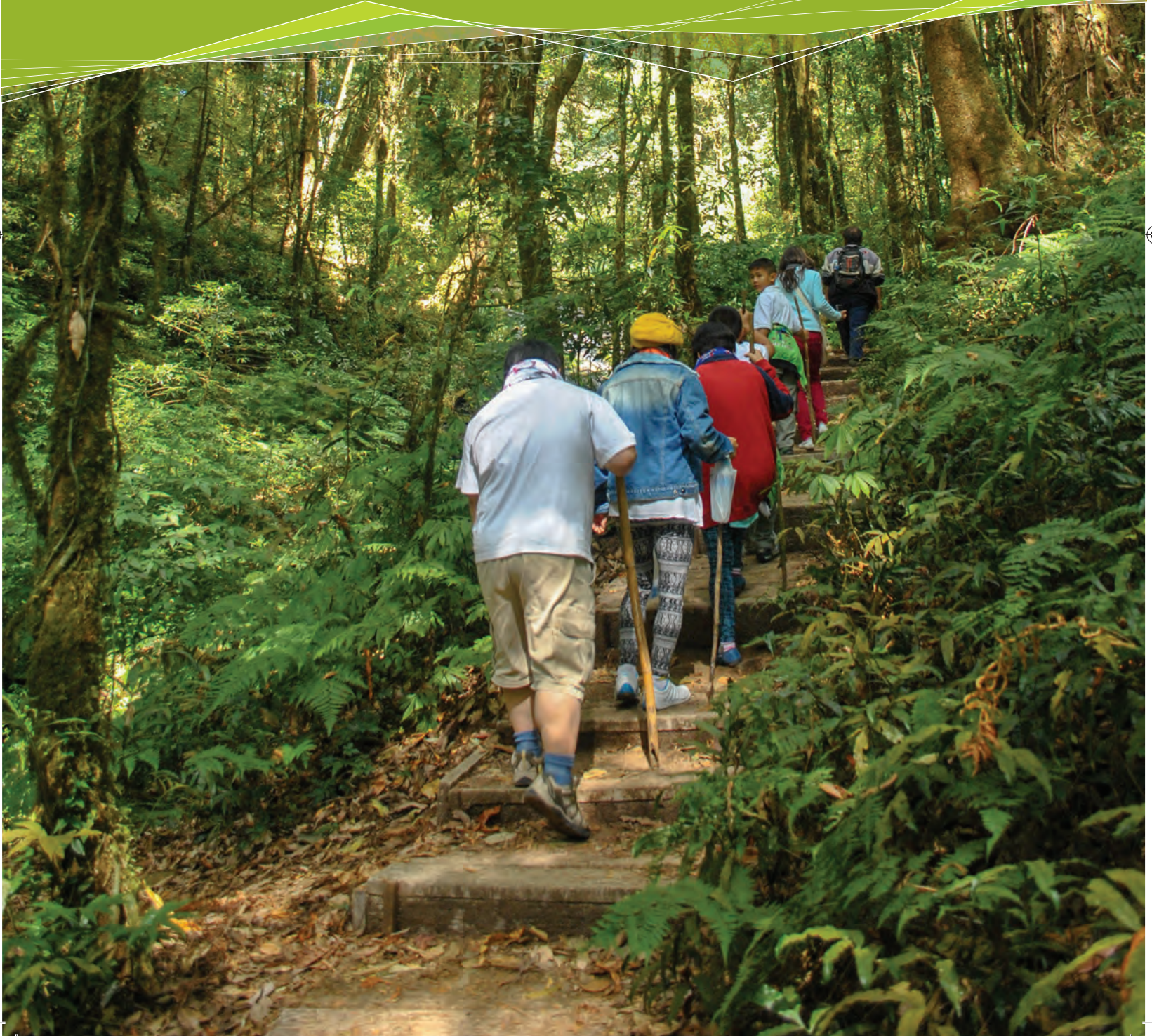
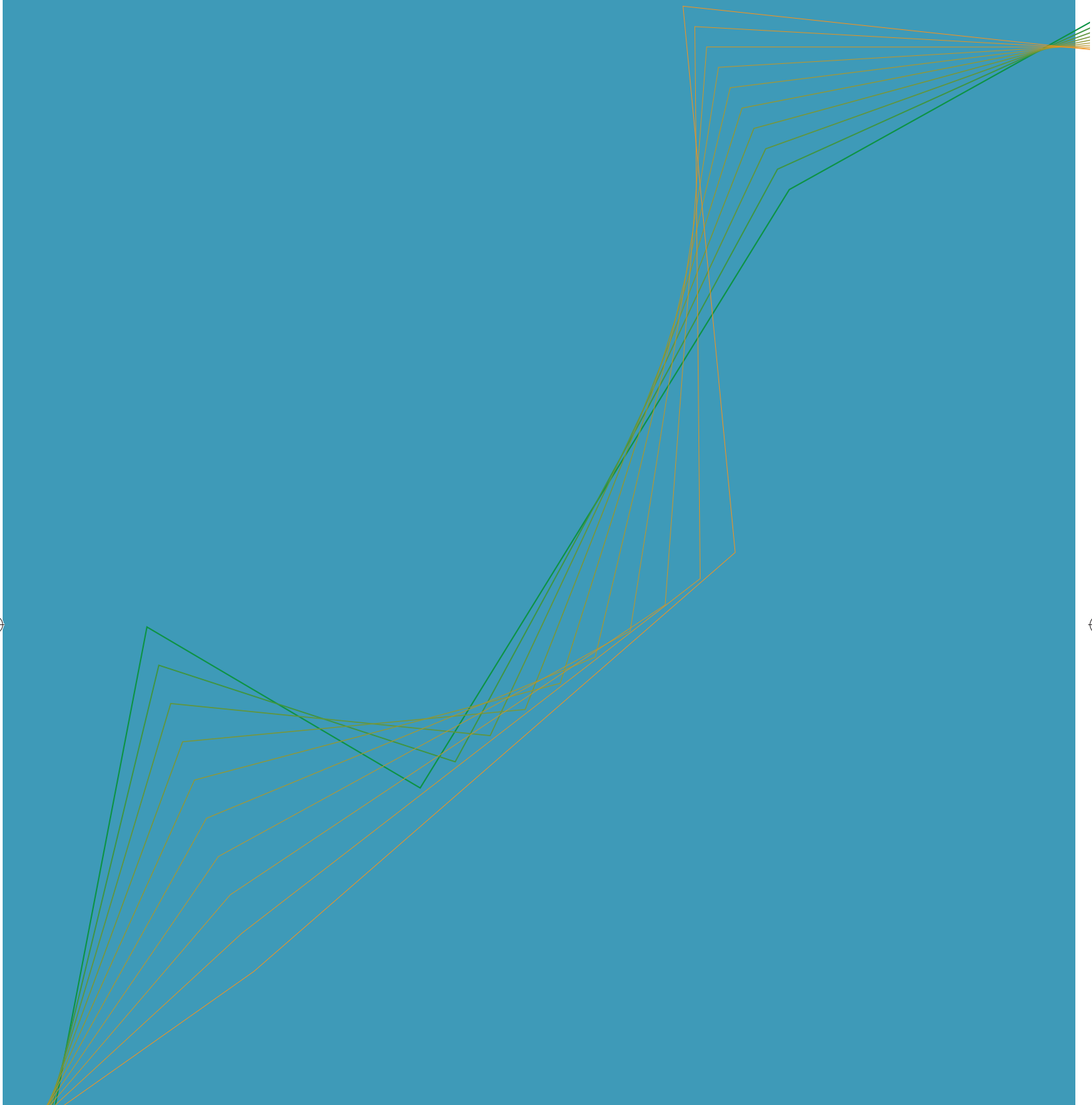




Australia's
Global
University

UNSW Research Centre for Primary Health Care and Equity Annual Report 2017





UNSW Research Centre for Primary Health Care and Equity
©2018 The University of New South Wales

Design and Printing coordinator: Janelle Farmer
Design: Eric Cheung
Photos: Keith McInnes Photography
Published
CRICOS Provider Number 00098G





CONTENTS

<u>TRIBUTE TO TERRY FINDLAY</u>	4
<u>ACKNOWLEDGMENT</u>	6
<u>BACKGROUND</u>	7
<u>MANAGEMENT</u>	8
<u>OUR STAFF</u>	15
<u>RESEARCH</u>	18
<u>SCHOLARSHIPS AND AWARDS</u>	31
<u>TEACHING</u>	32
<u>KNOWLEDGE EXCHANGE & CAPACITY BUILDING</u>	36
<u>PARTNERS AND AFFILIATES</u>	44
<u>PUBLICATIONS</u>	48
<u>FINANCIAL</u>	54
<u>CONTACT US</u>	55





Terry Findlay, Director of the Centre for Primary Health Care and Equity, died in December 2017.



TRIBUTE TO TERRY FINDLAY

Terry had a long career in primary health care and health service development, alternating between the UK and Australia. He began after graduating in social work in 1979 he worked in community health in Botany. He then went on to a number of roles in UK (largely in London) before returning to Australia in 1988 to work as Director of Community Health Services in Blacktown for 6 years. It was during this time that he was seconded to advise the Minister of Health on the strategic direction for primary and community health services.

He then moved to Canberra to work as Director of Primary Health Care and as Executive Director of ACT Community Care, a statutory body providing community health and disability services under contract with the ACT government. In 1999 he moved back to the UK to his ancestral roots in Glasgow where he was a General Manager for Primary Care and then Director of an integrated primary health care and social care partnership for the Greater Glasgow and Clyde region. This was a major challenge and achievement for Terry and in his own low key way he often referred to it when talking about our own fledgling attempts to develop more integrated approaches to the needs of disadvantaged populations. He applied this knowledge when he returned to work as Director of the project supporting the transition from Divisions of General Practice to Medicare Locals in 2011 to 2012 and as Head of Programs for the Australian Primary Health Care Research Institute from 2013 to 2015.





Terry worked with us as Director of the Centre for Primary Health Care for only a few years but had a conjoint appointment with the Centre since his return to Australia in 2009. Even though he worked only three days per week for the last 2 and half years, he had a lasting impact on our work and direction. He provided a smooth and steady transition for the Centre with the retirement of Gawaine Powell Davies who had been since our inception. This was also a time when we saw the retirement (failed or otherwise) of three others of our senior staff. This was one of the things he did well – calmly steering the Centre through times of change both internally and its externally environment. But he did much more than this. He helped develop new strategies, identified and negotiated new opportunities and relationships especially as we moved to develop further the model of research hubs embedded in local health districts and research involving complex partnerships across health services. He also nurtured and supported all of us especially the newer younger research leadership of the Centre.

Throughout his career, Terry was committed to equity addressing the needs of disadvantaged populations. He was also committed to the idea of primary health care and the integration of care across organisational silos. Integrated primary health care was not just an abstract idea or a means of keeping people out of hospital. It was a way of better addressing and being accountable to the needs of the population especially those that were most vulnerable. In applying these ideas, he was always strategic and pragmatic. His whole career was focused on promoting primary health care and health care in the community. He was in many ways a personification of our Centre's goal of "better fairer health in the community".

For all this, Terry was a dear colleague who we all miss greatly. He had a dry sense of humour and this helped us all in times of stress and change. His sudden illness and untimely passing left us all shocked and at a loss to know what to do. We can at least imagine what he would have done to help us through this.

Vale Terry.



ACKNOWLEDGMENT

As always, we begin by thanking our collaborators and supporters, some of whom have been with us for more than 20 years now. Without them, we would be able to achieve nothing.

Within UNSW, the Faculty of Medicine continues to support us generously and provide much of the organisational framework within which our research and teaching occurs. We have a particularly strong association with the School of Public Health and Community Medicine, and work with Centres and Schools across the University, including the Translation Cancer Research Network, the Centre for the Built Environment, the Social Policy Research Centre and the School of Biomedical Engineering.

Outside the university we work closely with several Local Health Districts and Primary Health Networks. We appreciate particularly the partnership of the three Local Health Districts with whom we have established research Hubs: the Centre for Health Equity Training Research and Evaluation (CHETRE) with South Western Sydney Local Health District, the Health Equity Research and Development Unit with Sydney and the South East Research Centre (SEaRCH) with South Western Sydney Local Health District. These hubs are joint enterprises which allow us to work together to address fundamental issues in primary health care and equity. In South Western Sydney the General Practice Unit at Fairfield is affiliated to the Centre, and the Ingham Institute for Applied Medical Research is an important partner and host for CHETRE.

We thank NSW Health – the ministry and the pillars, the Bureau of Health Information, the Agency for Clinical Innovation and the Clinical Excellence Commission, for their support as collaborators and commissioners of work. We are particularly grateful for the support we receive through the Public Health and Health Services Research Support Program, and will continue to receive under its successor, the Prevention Research Support Program. We also thank all the other bodies who have funded our work or supported it in other ways, including the Sax Institute, the National Health and Medical Research Council and Australian Research Council.

We have more research collaborators – local, national and international - than we can mention here. What is particularly encouraging is to see in the report new names alongside long-time collaborators. Not included in the report, but much appreciated, are the many individuals – from health services, non-government organisations and the community – who have given their time to take part in our research.

Our Steering and Advisory committees have continued to provide us with guidance. We thank their Chairs, Terry Campbell and Ian Webster, and all their members.

It is, of course, the staff who do the work, and they have continued to do so with care and dedication, despite the often-uncertain employment conditions under which they work. It is their work that is reported in these pages.

Finally, we must acknowledge with gratitude and great sadness the contribution of Terry Findlay, our Director, who became ill and then died in the second half of 2017. Here, as elsewhere in his long career, he made an enormous contribution.





The Centre for Primary Health Care and Equity has been operating as a UNSW Research Centre within the Faculty of Medicine since 2005. We have collaborative research Hubs with SWS Local Health District based in Liverpool, with Sydney Local Health District in Camperdown and with SE Sydney in Randwick, which is also the home base for the Centre as a whole.

Our mission is to contribute to better, fairer health and health care in the community by conducting research, evaluation and development that strengthens primary health care and addresses health inequities. In 2017 our research streams were:

- Prevention and Management of Long Term Conditions
- Health Care System Integration and Primary Health Care Development
- Action for Equity
- Informatics and eHealth
- Health Environment

Our work is applied, and we support our collaborators in putting the results of our research into practice. We conduct our research at all levels, from locally based projects to international collaborations. This enables us to compare across settings, while remaining well grounded in our local communities.

Our work focuses on areas that have some of the highest proportions of people of low socioeconomic status of refugee migrant and Aboriginal and Torres Strait Islander origins. All these have complex and distinct health care needs.

MANAGEMENT

2017 STEERING COMMITTEE



The Steering Committee oversees the work of the Centre, ensuring that it pursues its objectives in line with its terms of reference and ensuring the Centre is financially sound. The Committee met on 22nd March and 24th October 2017.

CHAIR

- Professor Terry Campbell** Senior Vice Dean (Academic), Faculty of Medicine, UNSW Sydney
- *Professor William Ledger** Senior Vice Dean, Head and Professor of the Discipline of Obstetrics & Gynaecology, Clinical Affairs, Faculty of Medicine, UNSW Sydney

MEMBERS

- Dr Teresa Anderson** Chief Executive, Sydney Local Health District
- **Associate Professor Gawaine Powell Davies** Acting Director, CPHCE, UNSW Sydney
- Terry Findlay** Director, Centre for Primary Health Care and Equity, UNSW Sydney
- Professor Mark Harris** Executive Director, Centre for Primary Health Care and Equity, UNSW Sydney
- Professor Ilan Katz** Professor, Social Policy Research Centre, UNSW Sydney
- Amanda Larkin** Chief Executive, South West Sydney Local Health District
- Professor Raina MacIntyre** Head, School of Public Health and Community Medicine, UNSW Sydney
- Professor Bill Randolph** Director, City Futures Research Centre, Faculty of the Built Environment, UNSW Sydney
- Dr Greg Stewart** Director, Primary and Integrated Community Health, South Eastern Sydney Local Health District

**Professor Ledger replaced Professor Campbell as Chair in October*

***Associate Professor Gawaine Powell Davies stood in for Terry Findlay as Acting Director from August.*



Teresa Anderson



Gawaine Powell
Davies



Terry Findlay



Mark Harris



Ilan Katz



Amanda Larkin



Raina MacIntyre



Bill Randolph



Greg Stewart

SECRETARIAT (NON-VOTING MEMBER)

- Ms Sarah Ford** Finance Manager, Centre for Primary Health Care and Equity, UNSW Sydney



MESSAGE FROM THE CHAIR OF THE STEERING COMMITTEE



I have been Chair of the Steering Committee since October 2017, following the retirement of the inaugural Chair, Professor Terry Campbell. My association with the Centre is therefore relatively recent, which means that I did not have the opportunity to work with Terry Findlay, Director of the Centre. Terry was diagnosed with cancer in August 2017 and sadly died only a few months later, in December. Terry had a distinguished career in health services development and management in Australia and overseas and was from all accounts one of the best of men. His predecessor, Gawaine Powell Davies, has kindly returned as Acting Director of the Centre until a successor is appointed.

The Centre has conducted research and evaluation and supporting the development of primary health care and health equity over many years, working at all levels from the very local to the international. As a result, the Centre has gained a wide experience and a broad perspective on health and healthcare, as well as of the relevant social and other factors. During 2017 the Centre pursued the directions set out in its 2016 strategic plan. These included strengthening the research hubs which the Centre shares with Sydney, SE Sydney and SW Sydney Local Health Districts. These joint ventures enable the Centre's work to be grounded in the work of the health services and overcome the gap that often exists between researchers and those who use the results of their work.

In 2017, the Centre's research income was largely stable at \$4.373m, down slightly from \$4.485m in 2016. At the same time, the Centre has excelled in boosting its publication and outreach activity. The number of books/chapter publications went from 3 in 2016 to 9 in 2017, the number of conference presentations from 18 to 44 and the number of published papers from 70 to 128 respectively. Importantly, the Centre's infrastructure grant from NSW Health was renewed, albeit at a lower level than previously. The focus of this funding is now prevention rather than primary health care.

My early impression of the Centre is of a well-focussed, well connected and high quality institution that continues to realign itself with the ever changing priorities and needs of the local and national health service and its providers. Its research output is of the highest calibre and has influence far beyond Sydney. The staff of the centre reflect the diversity of areas of relevance to its research and form a cohesive and supportive community. I particularly thank Professor Powell Davies for his invaluable work at short notice and also my fellow members of the Steering Committee for their support for the Centre and the staff for their excellent work.



BILL LEDGER

Chair, Steering Committee



2017 ADVISORY GROUP

The Advisory Group provides strategic advice to the Centre on its research program. It met on 1st June and 26th October 2017.

CHAIR

**Emeritus Professor
Ian Webster** School of Public Health and Community Medicine, UNSW Sydney

MEMBERS

**Professor
William (Bill) Bellew** School of Public Health, University of Sydney

Tish Bruce Deputy Director, Ambulatory and Primary Health Care, South Eastern Sydney Local Health District

Elyse Cain Advocacy Manager, NSW Council of Social Service

Natalie Cook NSW/ACT PHN Coordinator, Sydney North Primary Health Networks

Rhiannon Cook Senior Policy Officer, NSW Council of Social Service

***Associate Professor
Gawaine Powell Davies** Acting Director, CPHCE, UNSW Sydney

**Professor
Evelyne de Leeuw** Director, CHETRE, South Western Sydney Local Health District, CPHCE, UNSW Sydney

Terry Findlay Director, CPHCE, UNSW Sydney

Professor Mark Harris Executive Director, CPHCE, UNSW Sydney

**Associate Professor
Ben Harris-Roxas** Director, South Eastern Sydney Research Collaboration Hub (SEaRCH), CPHCE, UNSW Sydney

Tony Jackson Deputy Director, Primary and Integrated Community Health, South Eastern Sydney Local Health District

**Professor
Siaw-Teng Liaw** Academic General Practice Unit, Ingham Institute for Applied Medical Research

**Associate Professor
Jane Lloyd** Director, Health Equity Research and Development Unit (HERDU), CPHCE, UNSW Sydney

**Professor
Raina MacIntyre** Head, School of Public Health and Community Medicine, UNSW Sydney

**Associate Professor
Virginia Schmied** School of Nursing and Midwifery, University of Western Sydney

Miranda Shaw General Manager, Community Health, Sydney Local Health District

Chris Shipway Director Primary Care and Chronic Services, NSW Agency for Clinical Innovation

Vicki Wade Cultural Lead, Aboriginal Health, National Heart Foundation

Dr Christine Walker Chronic Illness Alliance, Victoria

**Associate Professor Gawaine Powell Davies stood in for Terry Findlay as Acting Director from August*



MESSAGE FROM THE CHAIR OF THE ADVISORY GROUP



It has been a hard year for the Centre's staff with the sad loss of Terry Findlay. Terry was Centre Director and widely respected for his long-standing involvement in community health, his warm leadership and for his capacity to build bridges between the array of health and social systems. Gawaine Powell Davies, who was looking forward to a new life, has gracefully and nobly stepped again into the role until a new appointment is made. The Advisory Committee is especially appreciative of his willingness and generosity in taking on this role.

The Centre's research aims to prevent and manage long-term conditions, take action to improve equity, health and the environment, integrate primary health care in the overall health system, each supported by cutting edge research in primary care informatics and e-health. The research in these areas, though logistically challenging, is conducted with intellectual rigour and is honed by front-line experience. It tells us what needs to be done and how well it is working.

The Annual Report details the ongoing work and achievements in these research streams. Each area must be given high priority if we are to deliver to those most in need. Some of the year's initiatives have been in preventive health programs for patients with severe mental illness, programs for community health workers, refugee health and on the impact of the urban environment on health.

It is essential that primary health care be maintained and strengthened. A recent evaluation of international health systems by the Commonwealth Fund rated Australia's health system at the top of the international league table; second to the UK. The top performing nations all had embedded primary health care services. Australia scored highly in - the processes of care, access, administrative efficiency and healthcare outcomes, but equity was not a strong point. There is a job to be done for which the Centre's work is apposite.

Significant changes in leadership have occurred through the year. Associate Professor Jane Lloyd has been appointed Director of Health Equity Research and Development Unit (HERDU) following the retirement of Associate Professor Elizabeth Harris. Associate Professor Ben Harris-Roxas has been appointed as Director of the South-Eastern Sydney Research Collaboration Hub (SEaRCH). These units, with the Centre for Health Equity, Training, Research and Evaluation (CHETRE) in South West Sydney, make up three outreach research hubs which engage directly with area public health services and community-based primary health care agencies. Alongside, the research hubs, strong, practical and formal partnerships have been established with the Local Health Districts in Sydney, south-west Sydney and south-eastern Sydney and with South Western Sydney and South Eastern Sydney and with Primary Health Networks in these and other areas.

The Advisory Committee strongly appreciates the support of the New South Wales Ministry of Health for the infrastructure funding provided through its program for prevention research.

The Advisory Committee values highly the commitment and achievements of Centre's staff and students. We especially congratulate those who have been awarded higher degrees arising from their research. For those moving on to other positions and career pathways, we wish them well for the future and thank them for their contribution to CPHCE.

We strongly support and value the outstanding leadership of Professor Mark Harris as the Centre's Executive Director as well as the leaders of the research hubs and research streams.

We thank the Faculty of Medicine and the School of Public health and Community Medicine for their material support and moral encouragement.

A handwritten signature in blue ink that reads "I. W. Webster".

EMERITUS PROFESSOR IAN W WEBSTER AO

Chair, Advisory Group



Professor Mark Harris,
Executive Director

CPHCE BOARD OF DIRECTORS

DIRECTORS



Associate Professor Gawaine Powell Davies,
CPHCE UNSW Sydney



Professor John Hall,
School of Public Health and Community Medicine,
UNSW Sydney



Professor Siaw-Teng Liaw,
Academic General Practice Unit South Western Sydney Local Health District



Professor Evelyne de Leeuw,
CHETRE South Western Sydney Local Health District



Associate Professor Elizabeth Harris,
HERDU Sydney Local Health District



Associate Professor Jane Lloyd, HERDU,
Sydney Local Health District



Terry Findlay,
CPHCE UNSW Sydney



Associate Professor Ben Harris-Roxas,
SEaRCH, South Eastern Sydney Local Health District



Dr Julie McDonald,
SEaRCH South Eastern Sydney Local Health District





MESSAGE FROM THE EXECUTIVE DIRECTOR



In 2017 the Centre has continued to develop and adapt to the changing environment both within UNSW and externally. Our three research hubs continue to develop mature research and development programs embedded with their local health districts. Jane Lloyd and Ben Harris-Roxas were appointed as Directors of HERDU and SEaRCH respectively. The hubs exemplify our approach to translational research with an agenda which is developed in partnership with health care services and providers. A feature of our work continues to be the strong partnerships we have developed with health services, other sectors and communities.

We received renewed infrastructure funding from the NSW Ministry of Health (Prevention Research Funding Scheme). This has helped us to reinforce our capacity for prevention research and its dissemination in the Centre and among our partners. Much of our research addresses the social determinants of health, exploring how health services and other sectors can work together to prevent and intervene early to address the health problems associated with urban development, poverty and social disadvantage. Our work on access to and quality of preventive care in primary health care informs guidelines, training, systematic approaches to embedding prevention in clinical care and health organisations. Our research programs on health literacy both in clinical care and in health organisations is at the cutting edge of international research on the topic.

New and innovative programs and projects have emerged. These include the use of digital technology in prevention in primary health care, an enhanced role of community health workers in health promotion, prevention, early detection and navigation to health programs and services, and preventive care for vulnerable population groups which include those with severe mental illness, refugees and young indigenous people. The new Health Environment theme that cuts across hubs and disciplines is picking up speed through Health Impact Assessments and our engagement with Western Sydney Airport. Our primary health care cohort data linkage study in Central and Eastern Sydney entered an exciting phase with the support of our partners (South Eastern Sydney Local Health District, Sydney Local Health District, Central and Eastern Sydney Primary Health Networks) under the leadership of Margo Barr. It is already informing the development and evaluation of integrated care strategies in the region.

The most significant event for CPHCE in 2017 occurred in December with the death of our Director Terry Findlay after a short illness. In the two and half years that he worked with us, we came to rely on his wisdom, experience and good humour in managing what is a very complex small organisation. He was loved by us all and is sorely missed. We are grateful to Gawaine Powell Davies who stepped back into the role and has helped us through a difficult patch.



PROFESSOR MARK HARRIS

Scientia Professor and Executive Director, Centre for Primary Health Care & Equity, UNSW Australia

CPHCE VISION

Our vision is for

Better, fairer health and wellbeing in the community

This will be achieved through our mission of

Primary Health Care and Equity research, development, evaluation and education

With the overarching goals of

- Promoting inclusion and equity for all groups within society especially the most disadvantaged or vulnerable
- Reform of local, national, and international systems to promote access, equity, prevention, integration and intersectoral action

UNSW 2025 VISION

UNSW will work with people from disadvantaged and marginalised communities, in support of improved social, health and economic wellbeing as part of our global commitment to more equitable and just societies.

UNSW will be recognised as an international exemplar in equity, diversion and inclusion.

UNSW will be recognised globally as a leading university for knowledge exchange. Our engagement with government, industry and the community will enable the translation of our work to advance social progress and economic prosperity.

1

To download the Strategic Plan 2016-2020 please go to this link:

<https://cphce.unsw.edu.au/news-events/news/2017/01/cphce-strategic-plan-2016-2020>



PROFESSOR

Professor Mark Harris
Professor Evelyne de Leeuw

MBBS, FRACGP, DRACOG, MD
MSc, MPH, PhD

ASSOCIATE PROFESSOR

Associate Professor Pat Bazeley
Associate Professor Elizabeth Comino
Associate Professor Elizabeth Harris
Associate Professor Ben Harris-Roxas
Associate Professor Gawaine Powell Davies
Associate Professor Jane Lloyd
Associate Professor Marilyn Wise

Cert Teaching, BA (Hons), PhD
BVSc, BSc, MPH, PhD
BA, DipEd, DipSoc Work, MPH, PhD
BSW, MPASR, PhD
BA (Hons), MHP
BAppSc (Health Ed), MPH, PhD
BA, MHP

SENIOR RESEARCH FELLOW/ CENTRE DIRECTOR

Mr Terry Findlay
Dr Karen Gardner
Dr Fiona Haigh
Ms Suzanne Ingram
Dr Upali Jayasinghe
Dr Susan Kirby
Dr Julie McDonald
Dr Catherine Spooner

BSocStud, MBus
BA, MPH, PhD
BSocSc, MPH, LLB, PhD
B.Com
MSc Maths, GradDip Stats, GradDip Appl Stats, PhD
BSc, MSc, MSc, PhD
BA, MPH, PhD, RN
BA, MPH, PhD

RESEARCH FELLOW

Dr Nighat Faruqi
Dr Karolina Krysinska
Ms Jane Taggart

MBBS, MCCH, PhD
MA, PhD
BEd, Dip PE, MPH

SENIOR RESEARCH OFFICER

Sharon Parker
Dr Hairong Yu
Heidi Welberry

BHSc (Nursing), MPH, RN
BEng (Hons), MSc, PhD
BSc (Hons), MBIostat



RESEARCH ASSOCIATE/RESEARCH OFFICER/PROJECT OFFICER

Cheryl (Jane) Anderson	Heath Worker certificate
Heather Attenbrow	BA (Media & Comms)
Melissa Bernstein	BA (Italian studies), MPH, CHES, CPH
Lynette Bolt	BGS, Dip Humanities Pathway Prg UNSW
Matthew Castino	Bpsych (Hons)
Alana Crimeen	BPhy, MPH
Emma Elcombe	Cert IV Bus, BAppSc (Equine Studies), MSc (Brain and Mind Sciences)
Koby Elliott	
Dr Kaniz Fatema	BSc (Hons), MSc, MSc, PhD
Iqbal Hasan	MBBS, MTH
Oshana Hermiz	MB, ChB, DS
Katie Hirono	BA, MPH
Karla Jaques	BPH
Dr Tejas Kanhere	BEng (Hons), MBBS
Rachael Kearns	B Nursing, PG Dip Int Health, MPH, RN
Kate Marshall	BPsych (Hons)
Annette Riley	BSW (Hons), MSW
Vitor Rocha	MD, MSc, MPH/HM Candidate
Shoko Saito	BNg, MCommH, MSC
Dr Nila Sharma	BAGAnSc, MA (Gender & Development), PhD
Hyun Song	BASc, MSc, PhD Candidate
Louise Thomas	BSc/BA

ADMINISTRATIVE OFFICER

Janelle Farmer	BInSt
Sarah Ford	BBus



AFFILIATED STAFF

Employed by South Western Sydney Local Health District

Mary Knopp	Dip Bus Admin
Andrew Reid	BA, PostGradDipIR, MPolPubPol
Charmaine Rodricks	
Joan Silk	BA (Hons), Dip Ed
Siggi Zapart	BPsych (Hons), PhD Candidate

EMPLOYED BY THE SCHOOL OF PUBLIC HEALTH AND COMMUNITY MEDICINE

PROFESSOR

Professor Siaw-Teng Liaw	MBBS, Dip Obstetrics, PhD, FRACGP, FACMI, FACHI
Professor John Hall	MBBS (UNSW), MTH (UQld), PhD (USyd), FACRRM, FAFPHM

SENIOR LECTURER

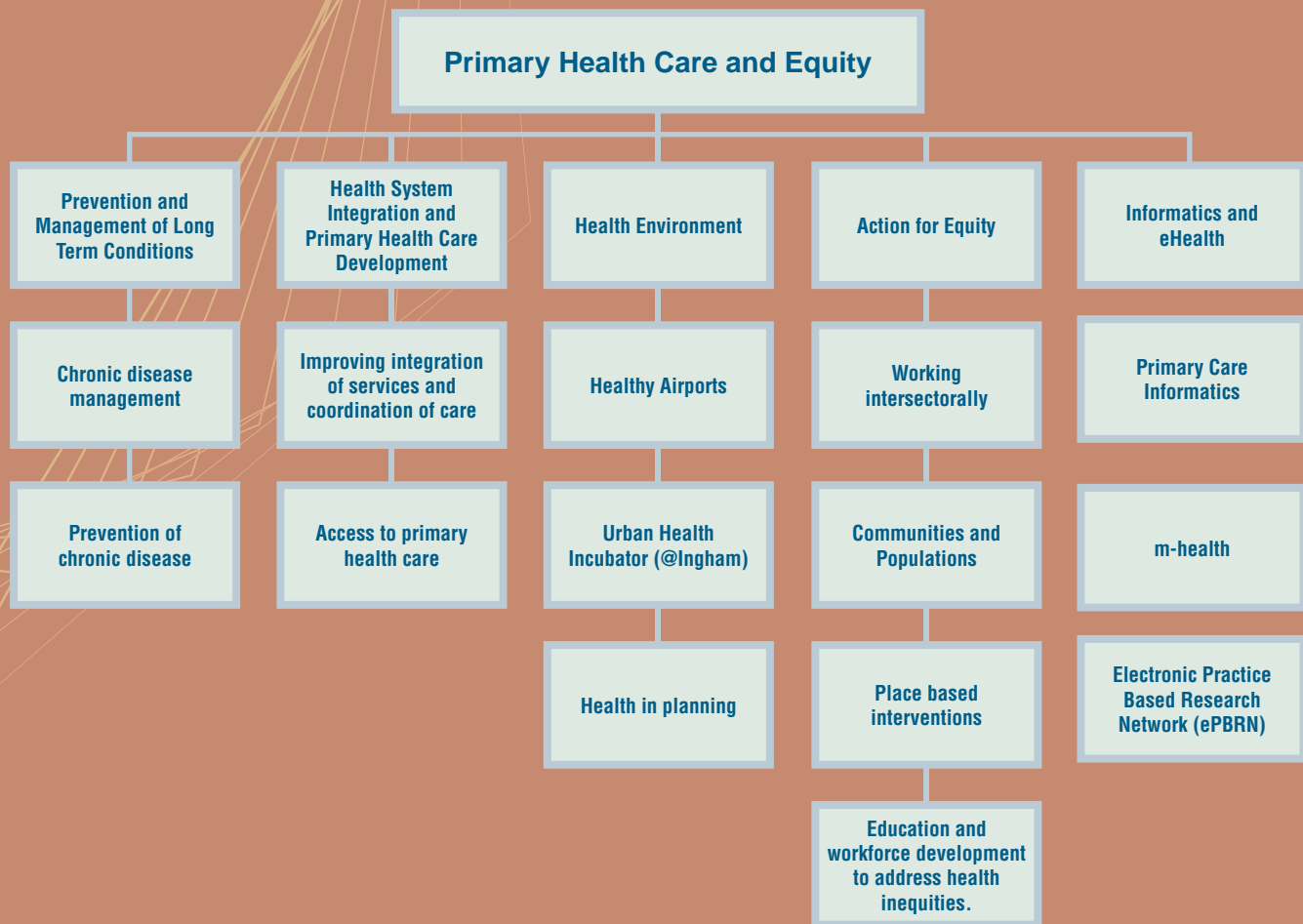
Kylie Vuong	BSc(Med), MBBS(UNSW), MIPH(Syd Uni), FRACGP, FPA Cert GP
--------------------	--

CONJOINT STAFF

Ben Cave	University of Strathclyde
Dr Elizabeth Denney-Wilson	University of Technology Sydney (to University of Sydney in May 2017)
Dr Sarah Dennis	University of Sydney
Dr Rebekah Grace	Macquarie University
Dr Patrick Harris	Sydney University
Dr Andrew Knight	South Western Sydney Local Health District
Dr Rachael Laws	Deakin University
Professor Jean-Frederic Levesque	Agency for Clinical Innovation
Dr Winston Lo	Western Sydney University
Cathy O'Callaghan	South Eastern Sydney Local Health District
Jude Page	Sydney Local Health District
Dr Joel Jin-Oh Rhee	Notre Dame University
Dr Heike Schutze	University of Wollongong
Dr Timothy Shortus	Broadway General Practice
Sarah Simpson	World Health Organization
Dr Michael Tam	South Western Sydney Local Health District
Dr Salim Vohra	Centre for Health Impact Assessment Institute of Occupational Medicine
Dr Qing Wan	Minto Family Medical Centre
Dr Anna Williams	The University of Notre Dame Australia



The Centre has five research streams, with a number of sub-programs.



Research projects active in 2017 are listed below by stream. The chief investigator is named first, in bold. The source of funding is given in brackets. For further details of projects, please see our website (www.cphce.unsw.edu.au)



PREVENTION AND MANAGEMENT OF CHRONIC DISEASE STREAM

Long term Chronic conditions are the major causes of morbidity and mortality in Australia and world-wide. These include cardiovascular disease, diabetes, chronic respiratory disease, arthritis, mental illness and cancer. Our research is focused on prevention, early detection and management of these conditions in primary health care. We are particularly concerned with the needs of vulnerable and disadvantaged groups who are less able to prevent illness or self-manage their health. A major focus has been on tailoring our interventions to patients' culture and health literacy and developing health literacy in disadvantaged groups. Our interventions include innovative models for the roles of health care providers, digital health, and tools to facilitate integration of care across primary and specialist or hospital services.

CHRONIC DISEASE MANAGEMENT

This program focuses on improving the quality of care and outcomes for a range of chronic diseases in primary health care including diabetes, chronic respiratory and cardiovascular disease, cancer and the physical health of patients with severe mental illness and drug and alcohol dependence. The theoretical basis of this work includes the expanded chronic illness model which identifies the support systems and organisation required for optimal patient centred care including new roles for primary care providers especially practice nurses and community health workers, new tools for patient self-management including m-health and e-health interventions, decision support and information systems.

PROJECTS

Electronic shared care plan for long term care of cancer patients: Translational Cancer Research Network (TCRN)

Research Team: **Mark Harris**, Jane Taggart, Melvin Chin, Andrew Knight (SWSLHD), John Lewis, Winston Liauw (St George), Kate Webber (POW)

Decision support for cancer shared care. (TCRN)

Research Team: **Mark Harris**, Jane Taggart, Kylie Vuong, Kate Webber (POW)

Culturally appropriate diabetes care in mainstream general practice for urban Aboriginal & Torres Strait Islander people (NHMRC)

Research Team: **Siaw-Teng Liaw**, John Furler (Department of GP, University of Melbourne), Margaret Kelaher (Onemda VicHealth Koori Health Unit, University of Melbourne), Phyllis Lau (Department of GP, University of Melbourne), Priscilla Margaret Pyett (Monash University), Kevin Rowley (Onemda VicHealth Koori Health Unit, University of Melbourne)

IMPACT study (See PHC and Integration stream). South West Sydney Learning Innovation Partnership Trial. Access to self management support for patients with type 2 Diabetes. (SWSPHN, SWSLHD)

Research Team: **Mark Harris**, Shoko Saito, Catherine Spooner, Amy Prince (SWSPHN), Marija Moretti (SWSPHN), Dianna Milosovic (SWSLHD)

Diabetes management in the community: Evidence check. (Agency for Clinical Innovation, Sax Institute)

Research Team: **Mark Harris**, Nighat Faruqi, Terry Findlay, Sharon Parker, Louise Thomas, Ben Harris-Roxas, Jane Taggart, Catherine Spooner.

Self-management of patients with type 2 diabetes (BSc Hons project)

Research Team: **Mark Harris**, Julie Dao (Honours student), Catherine Spooner, Winston Lo

Preventing chronic disease in patients with low health literacy using e-health and teamwork in primary health care (NHMRC)

Research Team: **Mark Harris**, Siaw-Teng Liaw, Catherine Spooner



PREVENTION OF CHRONIC DISEASE

Our research in prevention has focused on the behavioural risk factors (smoking, nutrition, alcohol, physical activity) and the physiological risk which predisposes to chronic disease (obesity, hypertension, dyslipidaemia, pre-diabetes, and overall cardiovascular risk). We have developed and evaluated interventions based on the 5As framework (Assess, Advise, Agree, Assist, Arrange) in children and adults. A particular focus is on the Royal Australian College of General Practitioners management of overweight and obesity and preventive care for disadvantaged groups with low health literacy. Our work has been translated into guidelines and programs conducted by state health, local health districts and primary health networks

PROJECTS

Electronic Activity Monitoring Systems (EAMS) as a primary healthcare intervention for promoting physical activity in obese patients

*Research Team: **Tejas Kahheres**, Mark Harris*

HeLP-GP Preventing chronic disease in patients with low health literacy using e-health in general practice (NHMRC)

*Research Team: **Mark Harris**, Karen Campbell (Deakin University), Ian Caterson (University of Sydney), David Crawford (Deakin University), Upali Jayasinghe, Annie Lau (Macquarie University), Siaw-Teng Liaw, Louise Parker, Manny Noakes (Adelaide University), Don Nutbeam (University of Sydney), *Sharon Parker*, Nigel Stocks (Adelaide University), Elizabeth Denney Wilson (UTS), Nick Zwar (UNSW/UoW)*

Assessment and management of overweight in young children

*Research Team: **Elizabeth Denney Wilson**, Mark Harris*

Consumer Navigation of Electronic Cardiovascular Tools – the CONNECT study (The George Institute)

*Research Team: **David Peiris**, (George Institute), Mark Harris, Sharon Parker*

Prevention of physical illness in patients with severe mental illness

*Research Team: **Ben Harris-Roxas**, Mark Harris, Sharon Parker, Catherine Spooner, Jane Taggart*



HEALTH CARE SYSTEM INTEGRATION AND PRIMARY HEALTH CARE DEVELOPMENT STREAM

Integrated Care was a major focus for the NSW Health System in 2017 for the Ministry, Pillars, Local Health Districts, and Primary Health Networks. During the year we worked through our research hubs to support a range of integration activities and research projects. Together with SESLHD, the NSW Agency for Clinical Innovation, and CHERE (UTS) we co-hosted fora on evaluating integrated care (with Dr Loraine Busetto, Tilburg University, the Netherlands) and the Patient Activation Measure (with Prof Judith Hibbard, University of Oregon, U.S.A.).

PROJECTS

Evaluation of the SESLHD Integrated Care Strategy (SESLHD)

Research Team: **Ben Harris-Roxa**, Terry Findlay, Mark Harris, Sue Kirby, Karen Edwards, David Lyle

Research on carers' information needs (SESLHD)

Research team: **Ben Harris-Roxas**, Tessa Wood

IMPACT CRE (APHCRI, CIHR)

Research team: **Mark Harris**, Gawaine Powell Davies, Jean Frederic Levesque, Teng Liaw, Ben Harris-Roxas, Sharon Parker, Hyun Song, Louise Thomas

Central and Eastern Sydney Primary and Community Health Data Linkage Resource (SLHD, SESLHD, CESP HN)

Research team: **Margo Barr, Elizabeth Comino**, Kathy Clinch (SESLHD), Deb Donnelly (SLHD), Shona Dutton (CESPHN), John Hall, Elizabeth Harris, Mark Harris, Ben Harris-Roxas, Tony Jackson (SESLHD), Jane Lloyd, Belinda Michie (CESPHN), Liam Shanahan (CESPHN), Kylie Vuong, Heidi Welberry

Use of patient activation measure as a QI tool to support more patient centred care (SESLHD)

Research team: **Ben Harris-Roxas**, Mark Harris, Tessa Wood

Advance Care Planning for patients with advanced illnesses attending hospital outpatient clinics (SESLHD)

Research team: **Joel Rhee**, Ben Harris-Roxas, Karolina Krysinska, Kate Marshall

Integration of care delivery between general practice and emergency department services in Liverpool (SWSPHN)

Research team: **Andrew Knight**, Serena Ayres, Vitor Rocha, Bishoy Marcus, Paul Middleton, Amy Prince

Integrating Cancer Survivorship Care with General Practice through improved communication (SWSPHN)

Research team: **Andrew Knight**, Ivana Durcinovska, Afaf Girgis

Exploring a Community of Practice for General Practitioners in Fairfield (SWSPHN)

Research team: **Andrew Knight**, Jennifer Green, Mark Harris, Yin Li, Joseph Nicholas, Hyun Song, Zahra Rassoly Obayd



HEALTH ENVIRONMENT STREAM

Since the publication of the new CPHCE Strategic Plan in early 2017 the Centre is working across themes and hubs to advance research, policy, practice and evaluation in the area of health environment.

Traditionally the label attached to this field of interest is 'health and built environment' or 'healthy urban planning'. CPHCE deliberately frames its focus on health environment, including (and not necessarily limiting itself to) the built, social, natural and corporate environment.

CPHCE and its hubs SEaRCH, HERDU and CHETRE are currently active across the service areas of three local health districts and dozens of local government authorities in the greater Sydney area. Although particular developments are unique to the local environment, they share common challenges of urban renewal and expansion, densification of populations and infrastructure, and meeting a range of service challenges that include literally all social determinants of health and health equity.

In its work with Local Health District patrons all hubs provide input into public exhibitions and consultation rounds that are statutorily required around major infrastructural change. For instance, CHETRE works with SWSLHD on the planning for the Sydenham to Bankstown Urban Renewal Corridor and works across sectors and stakeholders to develop a vision for a Healthy Airport in Western Sydney. In 2017 HERDU coordinated a Health Impact Assessment on the Green Square Draft Infrastructure Strategy and Plan with input from SLHD, the City of Sydney, CPHCE and community organisations. The redevelopment of Waterloo is likely to have many health impacts for marginalised populations. The development involves the renewal of public housing and the introduction of social mix based on housing tenure. The development is expected to occur over 15 to 20 years and therefore it will be important to conduct a number of research activities and EFHIAs over the lifespan of the development. SEaRCH is contributing to the South Eastern Sydney Local Health District place-based initiatives for equity and wellbeing in Maroubra.





PROJECTS

Developing a Health Impact Assessment policy and implementation strategy for Wollondilly Shire Council (SWSLHD)

*Research Team: **Fiona Haigh**, Alana Crimeen, Karla Jaques*

Linkage Development Support (UNSW)

*Research team: **Evelyne de Leeuw***

Liverpool Hospital Entrance Redevelopment Evaluation (SWSLHD)

*Research team: **Evelyne de Leeuw**, Melissa Bernstein, Fiona Haigh, Andrew Reid, Siggie Zapart*

Working with Councils Health Impact Assessment Learning by Doing Training and Support (SWSLHD)

*Research team: **Fiona Haigh**, Alana Crimeen, Karla Jaques*

Housing and Health partnership: Objective One Working Group Evaluating Housing Relocation Services in South Western Sydney Stage one (SWSLHD)

*Research team: **Fiona Haigh**, Melissa Bernstein, Alana Crimeen, Suzanne Ingram*

A literature review to support place-based interventions in areas of locational disadvantage (SWSLHD)

*Research team: **Fiona Haigh**, Melissa Bernstein, Alana Crimeen, Siggie Zapart*

Linkage Development Support (UNSW)

*Research team: **Evelyne de Leeuw***

Healthy Airports Stage 2 (SWSLHD)

*Research Team: **Evelyne de Leeuw**, Alana Crimeen, Fiona Haigh*

HIA on Badgery's Creek Airport stakeholders' engagement plan (SWSLHD)

*Research Team: **Katie Hirono**, Ben Harris-Roxas, Cesar Calalang (SWSLHD), Stephanie Fletcher-Larety (SWSLHD), Fiona Haigh, Karla Jaques, Elizabeth Millen (SWSLHD)*

Structured review to inform the development of a vision Statement for Healthy Airports (SWSLHD)

*Research Team: **Ben Harris-Roxas**, Alana Crimeen, Katie Hirono*

Health Impact Assessment training and technical support (VicHealth)

*Research Team: **Fiona Haigh**, Alana Crimeen, Karla Jaques*

Equity focused health impact assessment workshop (SESLHD)

*Research Team: **Fiona Haigh**, Ben Harris-Roxas, Karla Jaques*



ACTION FOR EQUITY STREAM

Health equity means that everyone has a fair opportunity to enjoy good health and to access the health services they need. Inequities arise when there are systemic differences in health status, health risks or access to health care between groups that are avoidable and unfair. Taking action to address inequities is core to the work of CPHCE and its hubs SEaRCH, HERDU and CHETRE. Each of the hubs have an equity focus which is also testament to the Local Health Districts who are committed to providing high quality health services to those patients who need it most and to working with government and non-government agencies to create environments that are conducive to health for all. Health Impact Assessments (HIA) are one of the tools that can be used to generate action to address health inequalities. In addition to the equity work in the hubs, CPHCE hosted training on the Innov8 model developed by WHO, an approach to review national health programs, in relation to sustainable development goals.





PROJECTS

Ways of Thinking Ways of Doing (WoTWoD) cultural respect in general practice (In collaboration with Gandangarra Local Aboriginal Land Council Local Aboriginal Organisations) (SWSLHD)

Research Team: **Siaw-Teng Liaw**, Mark Harris, Iqbal Hasan

Evaluation of a cervical screening project to increase participation rates of Nepalese and Bangladeshi Women (Cancer Institute NSW)

Research Team: **Julie McDonald**, Rachael Kearns

Can Get Health in Canterbury (SLHD, CESP HN)

Research Team: **Jane Lloyd**, Paula Caffery (SLHD), Gisselle Gallego, Nathalie Hansen (PHN), Elizabeth Harris, Mark Harris, Barbara Hawkshaw (PHN), Renee Moreton (SLHD), Miranda Shaw (SLHD), Marilyn Wise

Establish Bi-Lingual Community Educator program (CESPHN)

Research Team: **Jane Lloyd**, Brenda Goodger, Elizabeth Harris, Annette Riley, Ben Harris-Roxas, Renee Moreton, Lisa Woodland

The OPTIMISE project: Collaborative improvement of primary health care delivery to the Australian refugee community (SWSLHD)

Research Team: **Mark Harris**, Lisa Atkins (RHS), Winston Lo (WSU), Keith McDonald (SWSPHN), Tadgh McMahon (SSI), Marija Moretti (SWSPHN), Amy Prince (SWSPHN), Amitabh Rajouria (SSI), Shoko Saito, Mitchell Smith (SWSLHD), Hyun Song

Barriers and enablers to access to primary care for Syrian Refugees in SW Sydney (SWSLHD)

Research Team: **Mark Harris**, Winston Lo (SPHCM), Agata Wanigaratne (ILP)

Caring for refugee patients: The use of interpreters in primary care

Research Team: **Mark Harris**, Kim Griswold (University of Buffalo), Fern Hauck (University of Virginia), Anne MacFarlane (University of Limerick), Kevin Pottie (University of Ottawa)

A Literature Review of community-based approaches that reduce the risk of potentially preventable hospitalisations (SWSLHD)

Research Team: **Fiona Haigh**, Melissa Bernstein, Karla Jaques, Siggie Zapart

Latrobe Health Innovation Zone Charter (DHHS-VIC)

Research Team: **Evelyne de Leeuw**

Data Governance Protocol: Decolonising Research Practices

Research Team: **Suzanne Ingram**, Kaniz Fatema, Alex Brown (SAHMRI), Odette Pearson (SAHMRI), Ben Harris-Roxas, Karen Beetson (SWSLHD), Tim Croft (SESLHD)



INFORMATICS AND eHEALTH STREAM

In 2017, the Primary Care Informatics and eHealth stream continued to work within the CPHCE footprint (SW Sydney, SE Sydney, and Sydney Local Health Districts and Primary Health Networks). It also worked closely with the WHO Collaborating Centre on eHealth, also headed by Professor Liaw, and based in the UNSW School of Public Health & Community Medicine. Professor Liaw continues also to be a Chief Investigator in the NHMRC Centre for Research Excellence in eHealth (ehealth.edu.au), which is now established as the NHMRC CRE on Digital Health (2018-2012), with CIs from University of Melbourne, University of Sydney, Bond University and the CSIRO.

We continue to work with international collaborators and their teams, including:

- Quality of observational and real world Evidence captured in EHRs with Professor Simon de Lusignan (University of Surrey) and Professor Michael Kahn (University of Colorado),
- Sociotechnical implementations with Professor Craig Kuziemsky (University of Ottawa),
- Ethical, legal & social issues with Professors Bonnie Kaplan (Yale University) and Ken Goodman (Miami University)

Going forward, the primary care informatics and eHealth stream will grow this research area in close collaboration with the WHO Collaborating Centre on eHealth.

International health data harmonisation and benchmarking to support research across the continuum of care (UNSW)

Research Team: **Siaw-Teng Liaw**, Chitta Baral (Arizona State University), Simon de Lusignan (University of Surrey), *Mark Harris*, Jitendra Jonnagaddala, Louisa Jorm (UNSW), Michael Kahn (University of Colorado), Nigel Lovell (UNSW Biomedical Engineering)

Continuity of care in the Wollondilly Integrated Health Neighbourhood (SWSLHD, SWSPHN)

Research team: **Siaw-Teng Liaw**, Justin Duggan (SWSLHD), Bin Jalaludin, Jitendra Jonnagaddala, Keith McDonald (SWSPHN)

Systematic review: The use of mHealth in Healthy Ageing and Age-friendly care and services (WHO WPRO)

Research team: **Siaw-Teng Liaw**, Sameera Ansari, Mahfuz Ashraf, Jitendra Jonnagaddala, *Mark Harris*, *Ben Harris-Roxas*, Padmanesan Narasimhan





RESEARCH AND DEVELOPMENT HUBS

CPHCE has research and development hubs located in our three neighbouring Local Health Districts: Sydney, South Eastern Sydney and South Western Sydney. Each hub is a joint venture between the University and the Local Health District with a formal agreement, an advisory committee and joint funding. The work in each hub reflects the needs and opportunities within its Local Health District, with all involved in research and evaluation, research translation, education and capacity building in health services and advocacy for equity and building partnerships between Local Health Districts and Primary Health Networks.

SOUTH EASTERN SYDNEY RESEARCH COLLABORATION HUB (SEaRCH)

The South Eastern Sydney Research Collaboration Hub (SEaRCH) was established in 2015 as a partnership between CPHCE and the South Eastern Sydney Local Health District. SEaRCH continued to build its programs of research on chronic disease and multi-morbidity, integrated care, oral health, and priority populations.

2017 was a year of change and renewal for SEaRCH. A/Prof Ben Harris-Roxas succeeded Dr Julie McDonald as Director following her retirement, and Tessa Wood took over from Rachael Kearns as Research Officer. SEaRCH also welcomed the appointment of Dr Cathy O'Callaghan and Ms Claire Phelan as conjoint academics of the Centre. Their expertise in multicultural health research and oral health, respectively, significantly enhanced SEaRCH research capability and links with the District.

- SEaRCH secured more than \$350,000 in research funding in 2017, for research on topics including:
- the use of app translation in healthcare settings
- integrated care
- oral health
- carer's information and technology needs
- extended family caregiving arrangements and its relationship to child development and school readiness
- water pipe use in Arabic speaking communities
- participation in cancer screening programs amongst priority populations
- the use of the Patient Activation Measure (PAM) to improve quality of care in three clinical settings in SESLHD.

SEaRCH was active in a range of research, teaching and capacity building activities in 2017, including:

- convening the Principles and Practice of Primary Health Care course (PHCM9615) and guest lecturing in five other courses within the UNSW Master of Public Health and Master of Health Management programs
- participating in the establishment of the Central and Eastern Sydney Bilingual Community Education Program, which is funded through a partnership between SESLHD, SLHD, and CESPHN
- participating in SESLHD, CESPHN and Agency for Clinical Innovation steering committees, working groups and networks on topics including integrated care, liaison between general practice and specialist alcohol and other drug services, primary health care, and health justice partnerships.



CHETRE team

CENTRE FOR HEALTH EQUITY TRAINING, RESEARCH AND EVALUATION (CHETRE)

CHETRE has been operating in South Western Sydney since the mid-1990s and has been a part of CPHCE since its inception. It now has three research streams: Indigenous health (the Gudaga suite of research programs), decision support tools (HIAs) and engagement with locationally disadvantaged communities. The Communities and Populations research program has continued to work closely with Population Health in SWSLHD, with:

- developing a healthy airport concept paper
- developing an Equity Strategy for SWSLHD
- planning and delivering a forum on alcohol related harm
- participating in steering groups for the SWSLHD and SWSPHN Joint Needs Assessment and Campbelltown - Changing our Future: a whole of systems approach to childhood obesity in south western Sydney
- carrying out an evaluation of the Liverpool Hospital Entrance Redevelopment
- conducting research on health considerations in local government planning in Wollondilly Shire Council
- developing a long-range retrospective study of locational disadvantage data, methodologies and programme logic/theory with a view to 'scale wide' from current hotspots to new areas
- working with the Housing and Health Partnership to map the housing relocation process and identify points of intervention
- developing a Learning by Doing Health Impact Assessment training for Population Health study and key stakeholders.

Our Communities and Populations Program has commenced additional projects with the South-Western Sydney Primary Health Network. Our outreach service, Community Service for Training and Research partnership with Miller Art & Fact Inc. and Liverpool Community Drug Action Team (CDAT) held a forum on alcohol related harm in Miller, and included presentations from Emeritus Professor Ian Webster AO, Dr. John Crozier and Dr. Criss Moore.

Two student interns from the UNSW MPH program have contributed to supporting CHETRE projects. CHETRE has been instrumental in establishing the 'Urban Health Incubator' at the Ingham Institute - a virtual space where interdisciplinary research can grow and develop. CHETRE is offering hot desks to visiting scholars and our partners from (e.g.) the Kensington campus.

The Maternal Early Childhood Sustained Home-visiting program has been fully transferred to Western Sydney University. The Gudaga study remains with CHETRE. With local partners (Tharawal Aboriginal Corporation) a stock take of accomplishments and future opportunities is being led by the CHETRE Aboriginal health lead.



CHETRE Director Evelyne de Leeuw was featured in Kuwait newspaper for 'Healthy Cities' event in Kuwait



HEALTH EQUITY RESEARCH AND DEVELOPMENT UNIT (HERDU)

Health Equity Research and Development Unit (HERDU) is a unit of Sydney Local Health District (SLHD) and a research hub of the Centre for Primary Health Care and Equity (CPHCE) at UNSW Australia. HERDU works with SLHD staff, partners and with communities to identify health inequities and improve the health of groups of people who do not have opportunities to receive the health care and resources they need to be as healthy as others in the population. It does so through the research, service development and education programs that it leads and by supporting existing SLHD services, programs and process. HERDU's contribution can therefore be thought of both in terms of what HERDU does and in terms of what HERDU enables.

HERDU has led several events, programs and projects, and developed a variety of resources. In 2017 this included the running of the SLHD EquityFest, the development of the Equity Framework and the development and implementation of the Equity Challenge. The inaugural SLHD EquityFest was held on 10 March 2017, with over 250 attendees from SLHD, other government sectors, community organisations, non-government organisations and community members. It will now be an annual event to progress the equity agenda through partnership.

The SLHD Equity Framework highlights the evidence base for how to address equity and includes examples of the work that SLHD is already doing in this area. The Equity Challenge is an ongoing program that aims to develop capacity and skills among staff and partner organisations to identify and address equity issues. In 2017, a share of \$30,000 was awarded to three teams to develop their project ideas and learn valuable skills to identify and address health inequities in their services.

Service development initiatives include the establishment of the Bilingual Community Education (BCE) Program across SLHD, South Eastern Sydney Local Health District (SESLHD) and Central and Eastern Sydney Primary Health Network (CESPHN). The BCE Program is providing community-based education programs with Mandarin, Cantonese and Bengali Bilingual Community Educators on specific health issues such as diabetes, women's health, family violence and heart health to meet the needs of culturally and linguistically diverse communities. In 2017 HERDU also conducted a review of the Healthy Homes and Neighborhoods (HHaN) initiative which is a flagship initiative of SLHD that provides care coordination to vulnerable families.

HERDU has led several research projects. Can Get Health in Canterbury (CGHiC) is a place-based intervention that aims to improve health and reduce inequities for marginalised culturally and linguistically diverse populations in the Canterbury region. Over the last year CGHiC has undertaken a range of activities that address: child, family and women's health, mental health, chronic disease management and prevention, and capacity building, including health workforce development.

The CESPHN funded a qualitative research study to better understand the reasons families attend Canterbury Emergency Department (ED) after-hours, with a focus on access to General Practitioners (GPs) and ED for newly arrived migrant parents with young children. A round table seminar was held at Canterbury Hospital to present the study findings and identify practical steps to support CALD parents in the Canterbury area.

SLHD funded the pilot walking interviews and patient experience survey which was co-designed and administered in language by Bilingual Community Educators. The pilot study was completed in November 2017 and the findings presented to the General Manger of Canterbury Hospital. A larger study is currently being designed to develop, implement and evaluate an intervention to increase the organisational health literacy of two inner urban district health services, in partnership with Canterbury Hospital, SLHD, the Australian Commission on Safety and Quality in Healthcare, and Fairfield Hospital, South West Sydney LHD.

HERDU conducted training with partners engaged in the Child Health and Well-Being Partnership to identify ways to increase the effectiveness of inter-organisational partnerships to resolve complex social problems. This work is being complemented by updating our publication "Working together: intersectoral action for health" (a guide for organisations), including the analysis of contemporary illustrative case studies involving the health and other social sectors.



Evelyne de Leeuw

RESEARCHER PROFILE

Since 2015 I have the best job I've ever had in an otherwise already colourful career. I am the Director of the Centre for Health Equity Training, Research and Evaluation (CHETRE), CPHCE and Professor in the Faculty of Medicine of UNSW Sydney. I have the pleasure and privilege to do what I think academia should be all about: to work with real people to figure out real solutions to real problems.

My journey to CHETRE led through half a dozen of universities in The Netherlands, the USA, Canada, Denmark and Australia. I have also worked with friends and colleagues in research and practice in even more exotic places like El Salvador, Kazakhstan, Japan and Korea. Although many friends and neighbours express envy at my professional restlessness it is the burden of curiosity that keeps me on the move.

I had the career-shaping pleasure of studying, eons ago, at a new and revolutionary university in The Netherlands, in Maastricht. In compensation for the closure of the coal mines of the country in the 1970s (and I am avoiding reflections on the current carbon-based political economy in Australia...) the Dutch government established a university that should do everything different. It started with a medical school that used problem-based and community-driven learning to radically shift the health care discourse, and soon added an incubator faculty where strange new programmes were launched, including something called 'health sciences'. I was one of the first students there and discovered a fantastically intriguing world of health critique and an embrace of relatively revolutionary concepts like the Alma Ata Declaration – and was eventually able to attend one of those events myself when I took part in the crafting of the Ottawa Charter for Health Promotion in 1986.

The Ottawa Charter in a way became my gospel. I decided to devote my PhD research to its action area 'Build Healthy Public Policy' and wanted to know whether a nation-state could really build healthy public policy. The answer, after four years of inquiry, was 'no'. Ilona Kickbusch, the mother of the Ottawa Charter, probably knew that already when together with that statement she helped launch the Healthy Cities movement. Building Healthy Public Policy (these days 'Health in All Policy') is eminently feasible at the local level. And that is how I ended up becoming a research expert in Healthy Cities around the world – especially in trying to apply the body of knowledge from political science, public administration, and management to health promotion in local government.

Since 1989 I have consistently published theoretical, methodological and practical work in health political science and on Healthy Cities in journals like *The Lancet*, *Social Science and Medicine*, the *European Journal of Public Health* and *Health Promotion International*. Eventually I even qualified to become the Editor-in-Chief of the latter. I also wrote the odd book or two on these topics and seem to have arrived on a new plane where I'm no longer editing single articles or books, but entire book series (with Patrick Fafard – the Palgrave Studies in Public Health Policy Research Series) or encyclopedias (with John Ashton and Trevor Hancock – the Oxford Encyclopaedia on Healthy Cities and Communities).

CHETRE, however, is the place that really inspires me. We work at the interface of the (South Western Sydney) Local Health District, local government, university, and many other stakeholders. I am very pleased that we branch out into community development, really at the coalface, in the Miller neighbourhood. But also with our collaborative efforts with Housing NSW, an agency of the NSW Department of Family and Community Services (FACS), one of the largest providers of social housing in the world. With them we look at health dimensions of their work. And I am absolutely fascinated to be able to work with local and global stakeholders around our 'Healthy Airports' work related to the new airport in our Liverpool backyard.



In 2017, the Centre awarded top up scholarships of \$5,000 per annum to one staff on PhD of less than \$25,000 per annum. Other higher degree candidates are listed later in the report.

SCHOLARSHIPS

***Hyun Song** UNSW Tuition Free Scholarship (TFS) + Stipend 2016 -2019

*Also received CPHCE top up for lower paying PhD scholarships

AWARDS

Mark Harris **President's award, North American Primary Care Research Group, Kansas USA**

Hyun Song **2017-2018 TUTOR-PHC Trainee. Transdisciplinary Understanding and Training on Research – Primary Health Care.**



Mark Harris receiving the 'President's Award' from NAPCRG at Kansas, USA



TEACHING

Our teaching within the Faculty of Medicine, elsewhere in UNSW and for other universities and organizations allows us to share current research with students and enables staff to develop and maintain their teaching experience. Below is a summary of teaching by Centre staff in 2017.

UNDERGRADUATE MEDICINE AT UNSW

Subject	Lecturer(s)
Foundation Course	Mark Harris, Elizabeth Harris, Katherine Hirono
Independent Learning Project – student placement	Mark Harris (supervisor), Michael Tam,
Phase 1 Clinical Teaching	Andrew Knight, Michael Tam, Siaw-Teng Liaw
Phase 2 Society and Health	Prof Siaw-Teng Liaw, Michael Tam
Phase 3 Primary Care	Prof Siaw-Teng Liaw, Michael Tam, Andrew Knight
A career in health promotion	Evelyne de Leeuw (guest lecturer)
Determinants of health	Evelyne de Leeuw (guest lecturer)
Health Literacy in Primary Health Care	Jane Lloyd (guest lecturer)

POSTGRADUATE MEDICINE AT UNSW MASTER OF PUBLIC HEALTH PROGRAM

a) MPH Electives run through CPHCE

Subject	Lecturer(s)
Health Impact Assessment PHCM9628	Katherine Hirono (coordinator), Fiona Haigh (coordinator), Marilyn Wise (lecturers), Ben Harris-Roxas (guest)
Inequalities in Health PHCM9626	Elizabeth Harris, Jane Lloyd (coordinator), Evelyne de Leeuw, Katherine Hirono, Jude Page, Peter Sainsbury, Hyun Song, Marilyn Wise
Prevention and management of chronic disease PHCM9129	Mark Harris, Heike Schütze (coordinators), Elizabeth Denney-Wilson, Sarah Dennis, Mary-Beth MacIsaac, Catherine Spooner, Jane Taggart (lecturers), Ben Harris-Roxas (guest)
Principles and Practice of Primary Health Care Services in the Community PHCM9615	Ben Harris-Roxas (coordinator), Mark Harris, Jane Lloyd, Julie McDonald, Gawaine Powell Davies (guests)

b) Contributions to other MPH Courses

Subject	Lecturer(s)
Foundations in Public Health & Health Care Systems PHCM9041	Ben Harris-Roxas, Evelyne de Leeuw
Development human rights and health	Fiona Haigh
Environmental Health PHCM9612	Ben Harris-Roxas

Other Undergraduate and Graduate Teaching

Subject	Lecturer(s)
Work effectively with Aboriginal and Torres Strait Islander peoples – Wollongong	Heike Schütze (coordinator and lecturer)
How to do HIA in a nutshell – Wollongong	Katherine Hirono (guest lecturer)
Environmental Health ENVS819 – Macquarie	Ben Harris-Roxas (guest)
Lifespan and Health – Social Work UNSW	Annette Riley (tutor)
Culture, Identity and Diversity	Annette Riley (tutor)
Organisational Practice	Annette Riley (tutor)

Other Teaching

Subject	Lecturer(s)
Supervision of GP Registrars in Practice for GP Synergy	Siaw-Teng Liaw, Andrew Knight, Joel Rhee, Michael Tam, Nicholas Zwar (supervisors)

Short Courses and Workshops

Course	Lecturer(s)
Improving access to quality health services to improve health equity: learning by Doing. Two-day intensive workshop and mentoring	Elizabeth Harris, Marilyn Wise, Heike Schütze, Telphia-Leanne Joseph
Health Impact Assessment Learning by Doing Training	Fiona Haigh and Katie Hirono (coordinators and lecturers)



PHD RESEARCH STUDENTS

The Centre provides many opportunities for research students. In 2017 a total of nine PhD students were enrolled at the Centre (including a number of CPHCE staff members). In addition, CPHCE staff co-supervised a number of students from other Universities.

Name	Thesis Title	Supervisor/ Co-supervisor	Expected Completion/ Award Date
Anna Williams*	Conceptualising self-management: patient engagement in the management of their chronic illness	Mark Harris, Patricia Bazeley	2017 - awarded
Fiona Haigh*	From advocacy to action: Utilising Health Impact Assessment as a tool to realise the right to health.	Patricia Bazeley Lynn Kemp	2017 - awarded
Hyun Song	Measurement and Meaningful Use of Patient Experience in Australian Primary Health Care	Mark Harris, Jean-Frederic Levesque, Sarah Dennis	2019
Jitendra Jonnagaddala	Empirical methods for determination of coronary risk using electronic health records	Siaw-Teng Liaw, Blanca Gallego Luxan, Pradeep Ray	2017 - awarded
John Lewis	Enhanced information systems to support general practitioners to manage the monitoring and treatment of colorectal cancer survivors in accordance with principles of evidence-based practice	Siaw-Teng Liaw, Ben Smith, Pradeep Ray	2019
Nouhad (Nina) El Haddad*	Ethnicity and health literacy for weight management in non-English speaking migrants attending primary health care	Mark Harris, Elizabeth Denney-Wilson, Nighat Faruqi, Catherine Spooner	2017 - awarded
Pankaj Garg	Well Child Care	John Eastwood, Siaw-Teng Liaw	2018
Siggi Zapart*	Effective sustained nurse home visiting: who benefits, why and how?	Lynn Kemp, Jenny Knight	2018

* CPHCE Staff enrolled in post-graduate study

INDEPENDANT LEARNING PROJECT (ILP) RESEARCH STUDENTS

Name	Thesis Title	Supervisor/ Co-supervisor	Completion
Agata N Wanigaratne	Barriers and enablers to Syrian refugees accessing primary care in South-West Sydney	Mark Harris, Winston Low	2017



PHD STUDENT PROFILE



**Dr Nouhad (Nina)
El-Haddad**

My interest in research began during my time as a student research dietitian at the Children's Hospital at Westmead. As part of my Master of Nutrition at Dietetics at the University of Sydney, I completed a research project looking at serum vitamin B12 concentration of overweight and obese children and adolescents with insulin resistance and/or pre-diabetes in Australia. This ignited my interest in research and academic work.

Shortly after, I was fortunate enough to begin my journey as a PhD student at CPHCE. The topic of my thesis was exploring the interaction between ethnicity and health literacy for weight management among obese Arabic-speaking immigrants in Australian primary health care. My PhD was nested within a cluster randomised controlled trial of weight management in general practice. It was participants and data from this trial that provided me with the core materials for my analysis, which was a combination of quantitative and qualitative data.

It was important to me that the topic needed to be relevant to primary health care. As a dietitian, I frequently deal with obesity and its management, so investigating a topic that could contribute in a small way to improving our understanding of weight management was a priority. Although I have completed my PhD, I still feel like my work is incomplete. I am keen to explore ways to translate my work into the primary health care setting to truly make a difference.

Since completing my PhD I have been lecturing in nutrition and public health subjects at The University of Technology, Sydney and Western Sydney University.

I am indebted to a group of people whom without their significant contribution, guidance and support this PhD would not have been possible. Namely my supervisors, Professor Mark Harris, Dr Catherine Spooner, Dr Nighat Faruqi and Professor Elizabeth Denney-Wilson, as well as the staff at CPHCE.



KNOWLEDGE EXCHANGE & CAPACITY BUILDING

Making a difference means using the results of our research to influence health and health care. In disseminating our findings, we go beyond publishing in academic journals and presenting at conferences. We work formally and informally with health departments, Primary Health Networks and Local Health Districts to support planning, implementing and reviewing policy and practice, with our research Hubs providing an important meeting place with Local Health Districts. Most of the students in our postgraduate courses in the Master of Public Health program are health professionals and others working in the primary health sector, and our workshops and seminars are directed towards health service as well as academic audiences.

Listed here are a number of the events conducted in 2017, including seminars, webinars, workshops and forums. We recognise the financial support of the NSW Ministry of Health through the Population Health & Health Services Research Support Program and the Prevention Research Support Program. These contribute significantly to our capacity to make these events accessible to staff of the NSW health system.



CALENDAR OF EVENTS

Name	Presenters	Date	Number of registration
Planning health promotion programmes	Prof Gerjo Kok Gill ten Hoer Prof Evelyne de Leeuw	28 February 2017	36
Risk Stratification – Research Directions in the Netherlands and Australia	Dr Arianne Elissen	28 March 2017	16
Work physical activity and health promotion	Prof Susanne Tittlbach	13 April 2017	14
Predictive Risk Modelling Project	Dr Tracy L. Johnson	18 April 2017	30
Building health literacy in GPs	Prof Gill Rowlands	11 May 2017	17
Opportunities and challenges of using routine clinical data for surveillance and quality improvement	Prof Simon de Lusignan	13 July 2017	47
Innov8 - Equity & Commissioning Workshop	Sarah Simpson	2-3 August 2017	25
CPHCE Annual Forum	Prof Bill Randolph Prof Mark Harris Prof Peter Sainsbury A/Prof Jane Lloyd A/Prof Ben Harris-Roxas Prof Tony Kelleher	16 August 2017	112
Learning by Doing Workshop - Equality Challenge Festival	A/Prof Elizabeth Harris A/Prof Jane Lloyd A/Prof Gawaine Powell Davies Prof Mark Harris Dr Richard Broome Jude Page A/Prof Marilyn Wise Dr Gisselle Gallego	30 - 31 August 2017	22
A conversation with Jenny Popay on narrative synthesis	Prof Jennie Popay	9 October 2017	51
The Big Local – Tackling Health Inequality: What can we learn from place based initiatives in the UK	Prof Jennie Popay	9 October 2017	127
Exploring the Patient Activation Measure	Judith Hibbard	5 October 2017	71
Evaluating Integrated Care	Loraine Busetto	23 November 2017	35



2017 CPHCE ANNUAL FORUM

The CPHCE Annual forum was held on 16th August 2017 at John Niland Scientia Building, UNSW Sydney

The CPHCE Annual Forum is an important calendar event where we showcase our current research and recognise organisations and individuals with whom we have worked and who have assisted us in our research. It is also a networking opportunity where our staff can meet staff from our partner organisations. Over 110 staff, research partners and colleagues from interstate attended this year's Forum.

The Forum theme was "Health Environments". Professor Bill Randolph (City Futures Research Centre, UNSW) discussed the links between public health and urban planning, Professor Peter Sainsbury (SWSLHD) discussed Healthy Airports, and CPHCE staff described two Health Impact Assessment projects.



Individual Partnership Award
Dr Greg Stewart, SESLHD



Organisational Partnership Award
NSW Refugee Health Service – Dr Mitchell Smith



Health Impact Assessment Partnership Award
Green Square Unit – Allison Heller



INNOV8 - EQUITY & COMMISSIONING WORKSHOP

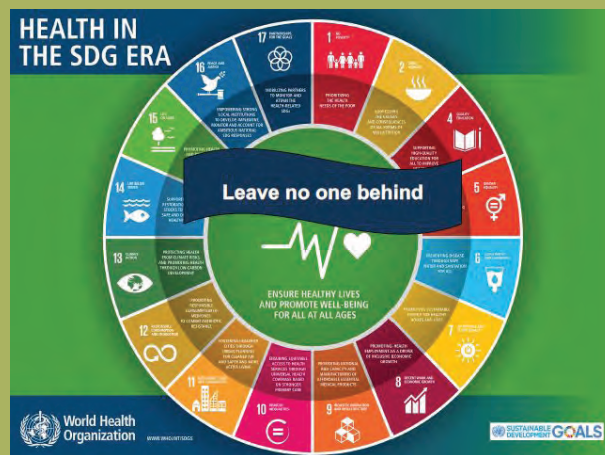
2nd-3rd August 2017 at Harbourview Hotel, 17 Blue Street, North Sydney

This workshop was attended by 16 people from SESLHD, SLHD and CESPHE. The aim was to introduce participants to the World Health Organisation innov8 program:

Innov8 is an eight-step review process developed by the World Health Organization (WHO) that examines the equity implications of policies and programs. It does this by identifying ways to make concrete, meaningful and evidence-based actions to make the health services programme more equity-oriented.

The principles and practice of commissioning has been introduced into the Australian primary health and social care sectors in recent years. Specific approaches have been adopted by Primary Health Networks and Local Health Districts are developing commissioning roles that will have significant equity implications

This workshop aims to increase our knowledge of the Innov8 approach using commissioning as a current and important area of policy and practice focus.



Presentation slides form Innov8



LEARNING BY DOING WORKSHOP - EQUALITY CHALLENGE

30th - 31st August 2017 at Colonial theatre, AGSM Building, UNSW

The Sydney Local Health District Equity Challenge aims to develop capacity and skills among staff and partner organisations to identify and address equity issues. In 2017 a share of \$30,000 was awarded to three teams to develop their project ideas and learn valuable skills to identify and address health inequities in their services. These include:

1. 'Tidda-Links': Connecting Aboriginal women with sexual assault and domestic violence services. This project is working with the Redfern Aboriginal Medical Service, community and SLHD services to tailor the service to the specific needs of Aboriginal women.
2. Peering Out: Peer Participation Program. People who inject drugs are at increased risk of a range of health, social and housing issues. Working with trained community based peers this project is providing information and support and aims to improve trust and access to quality health and support services.
3. Occupational therapy (OT) outreach for children and families in Canterbury: This project has taken essential OT services to some of the most disadvantaged and highest in need sectors in the community to address barriers to attending because of transport and other challenges.



EVALUATING INTEGRATED CARE SEMINAR

23rd November 2017 at Boral Theatre, AGSM Building, UNSW

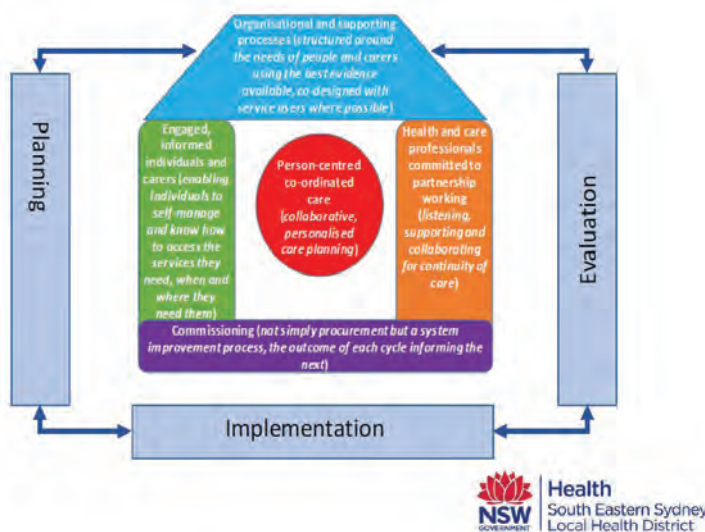
Integrated care has the potential to improve health outcomes, enhance patient experience, and increase cost effectiveness, but findings from evaluations have so far been mixed. This seminar presented the COMIC Model, a comprehensive model for evaluating of integrated care initiatives.

The COMIC Model seeks to:

1. analyse individual integrated care initiatives
2. enable comparison of integrated care initiatives in a systematic way.

The COMIC Model enables people involved in integrated care to find their own answers to what works, when, and why. This seminar will be relevant for health professionals, planners, managers and consumers involved in integrated health services.

The seminar was presented by Dr Loraine Busetto, scientific coordinator of the newly established Stroke Consortium Rhine-Neckar (FAST) at Heidelberg University Hospital.



Presentation slides from Evaluating Integrated Care seminar



STAFF MEMBERSHIP OF EXTERNAL COMMITTEES

Andrew Knight	<ul style="list-style-type: none"> ▪ The Nepean Blue Mountains Primary Health Network ▪ SWSLHD Cancer Services Governance Committee ▪ Fairfield Hospital Clinical Council ▪ Fairfield Hospital Research & Innovations Committee ▪ NPS Medicinewise Board Director ▪ The Improvement Foundation (APCC) ▪ The Australian Commission on Safety and Quality in Healthcare Primary Care Committee
Ben Harris-Roxas	<ul style="list-style-type: none"> ▪ Member, Editorial Board of Impact Assessment and Project Appraisal ▪ Member, Editorial Board of Environmental Impact Assessment Review ▪ Associate Editor, BMC Public Health ▪ Convenor, Global Working Group on Health Impact Assessment, International Union for Health Promotion and Education ▪ Member, NSW Committee, Australasian Evaluation Society ▪ Judging panel, Health in All Policies Awards, Christchurch City Council and Canterbury District Health Board
Elizabeth Comino	<ul style="list-style-type: none"> ▪ Waran Warin Steering Committee
Elizabeth Harris	<ul style="list-style-type: none"> ▪ International Union for Health Promotion and Education (IUHPE). Global Working Group on Health Impact Assessment
Evelyne de Leeuw	<ul style="list-style-type: none"> ▪ Member, Ingham Institute Scientific Advisory Committee ▪ Member, SWSLHD Population Health Division Executive ▪ Member, SWSLHD Research and Teaching Committee ▪ Editor-in-Chief, Health Promotion International ▪ Editor, Palgrave Series in Health Political Science ▪ Editor, OUP Encyclopedia of Healthy Cities and Communities ▪ Member of the Editorial Board, Global Health Promotion ▪ Chair, Social Media and Responsive Technologies Committee IUHPE ▪ Member, Global Scientific Committee IUHPE world conference ▪ Member, Peer Review and Assessment Board, O'Brien Institute of Public Health, University of Calgary (Canada)

Gawaine Powell Davies	<ul style="list-style-type: none"> ▪ Primary Health Care Research Information Service Strategic Advisory Group
Gisselle Gallego	<ul style="list-style-type: none"> ▪ Western Sydney Local Health District Research Management Committee Meeting ▪ Research & Development subcommittee (ACI Intellectual Disability Health Network) ▪ National Disability Services ▪ Ethics Committee Family Planning New South Wales
Joan Silk	<ul style="list-style-type: none"> ▪ Liverpool Community Drug Action Team
Julie McDonald	<ul style="list-style-type: none"> ▪ Primary Health Partnership Committee ▪ SESLHD/CPHCE Research Hub Operations Committee ▪ SESLHD Integrated Care Strategy Steering Committee
Kaniz Fatema	<ul style="list-style-type: none"> ▪ Associate Editor, BMC Public Health
Mark Harris	<ul style="list-style-type: none"> ▪ Inner Western Sydney Medicare Local Board ▪ Public Health Research and Practice Editorial Board ▪ National Diabetes Data Working Group ▪ NHMRC Alcohol Guidelines Group ▪ NHMRC Prevention and Community Health Committee ▪ NHMRC Mental Health and Parenting Working Committee ▪ Primary Health Care Research, Evaluation and Development Strategy Advisory Committee ▪ RACGP Quality Committee ▪ RACGP Red Book Task Force ▪ RACGP Smoking Nutrition Alcohol Physical Activity guide working group (Chair)
Michael Tam	<ul style="list-style-type: none"> ▪ SESLHD/CPHCE Research Hub Operations Committee SWSPHN Mental Health Advisory Committee ▪ Fairfield Hospital Clinical Council ▪ Fairfield Hospital Research & Innovations Committee ▪ Fairfield Hospital General Clinical Training Committee ▪ Society and Health design and Implementation Group ▪ Primary Care Course DIG ▪ Mental Health Network Executive Committee, NSW ▪ Pharmacotherapy Advisory Group, Mental Health Commission of NSW ▪ RACGP National Research Chief and Evaluation Ethics Committee
Siaw-Teng Liaw	<ul style="list-style-type: none"> ▪ SWSLHD Research & Teaching Committee ▪ SWSLHD-SWSPHN Integrated Health Committee Member ▪ SWSLHD Human Research Ethics Committee ▪ Fairfield Hospital Clinical Council ▪ NSW Acute Care Task Force ▪ NPS MedicineInsight, Data Advisory Committee ▪ RACGP National research and Evaluation Ethics Committee (Chair) ▪ WHO Collaborating Centre for Health (Chair) ▪ IMIA Primary Care Informatics WG (Chair)
Terry Findlay	<ul style="list-style-type: none"> ▪ Chronic Care Network Executive Committee – Agency for Clinical Innovation ▪ Primary Health Stakeholders Meeting – Agency for Clinical Innovation ▪ SE and Central Sydney Primary Health Care Partnership Committee ▪ HERDU Executive Steering Committee – Sydney LHD ▪ SEaRCH Operations Committee – SE Sydney LHD ▪ Health Equity Alliance – NSW Council of Social Service ▪ UNSW/Australian Council of Social Service Poverty & Inequality Initiative



PARTNERS AND AFFILIATES

We collaborate with many different individuals and organisations. Some of our main partners in 2017 are listed below.

UNSW

- Biomedical Systems Research Laboratory, School of Electrical Engineering and Telecommunications
- Faculty of Law
- Faculty of Medicine Lifestyle Clinic
- Faculty of the Built Environment
- School of Public Health and Community Medicine
- Social Policy Research Centre
- Translation Cancer Research Network
- Ingham Institute for Applied Medical Research

HEALTH DEPARTMENTS

- Agency for Clinical Innovation (ACI)
- Australian Government Department of Health and Ageing
- Bureau for Health Information
- Hospitals Contribution Fund of Australia
- NSW Ministry of Health
- Victorian Department of Health
- Victorian Health Promotion Foundation

HEALTH SERVICES

- Inala Aboriginal Health Service
- South Western Sydney Local Health District
- Sydney Local Health District
- Carrington Health
- Gandangarra Aboriginal Health Services, NSW
- South Eastern Sydney Local Health District
- Tharawal Aboriginal Corporation, NSW

- Uniting War Memorial Hospital, NSW
- Western NSW Local Health District
- Western Sydney Aboriginal Medical Service

OTHER GOVERNMENT DEPARTMENTS

- Lakemba School as Community Centre (NSW Department of Education and Communities, as part of Families NSW)
- NSW Department of Education and Communities
- NSW Department of Family and Community Services
- Victorian Department of Education and Early Childhood Development

LOCAL GOVERNMENT

- Campbelltown Council
- Canterbury City Council
- Canterbury-Bankstown City Council
- City of Sydney
- Fairfield Council
- Liverpool City Council
- Randwick City Council
- Whittlesea Council
- Wollondilly Shire Council





AUSTRALIAN UNIVERSITIES AND RESEARCH INSTITUTES

- Australian National University
- Broken Hill University
- Flinders University
- LaTrobe University
- Macquarie University
- Monash University
- Sax Institute
- The George Institute
- University of Melbourne
- University of Adelaide
- University of Sydney
- University of Technology Sydney
- Western Sydney University

NATIONAL

- Australian Council of Social Services
- Australian Medicare Local Association
- The Royal Australian College of General Practitioners

PRIMARY HEALTH NETWORKS

- Central and Eastern Sydney Primary Health Network
- South Western Sydney Primary Health Network
- Western NSW Primary Health Network

NON-GOVERNMENT ORGANISATIONS

- Australian Drug Foundation
- Ernst and Young
- Liverpool Migrant Resource Centre
- Ashcroft High School
- Australian Practice Managers' Association
- Beyond Blue
- Cabramatta Community Centre
- Chronic Illness Alliance

- Community 2168
- EquiACT
- Fairfield Migrant Resource Centre
- GP Synergy
- Liverpool Community Drug Action Team
- Metro Assist
- National Aboriginal Community Controlled Health Organisation
- NPS MedicineWise
- NSW Service for the Treatment and Rehabilitation of Torture and Trauma Survivors (STaRTTS)
- Royal Australian College of General Practitioners
- Settlement Services International (SSI)
- The Heart Foundation

OTHER GOVERNMENT AGENCIES

- Legal Aid NSW

INTERNATIONAL

- Denver Health and Hospital Authority, US
- Edinburgh University
- Institut National de Santé Publique du Québec
- International Union for Health Promotion and Education
- Seoul National University
- The Society of Practitioners of Health Impact Assessment
- Lancaster University
- Maastricht University
- Manchester University
- McGill University
- National Healthcare Group Polyclinics, Singapore
- Tilburg University
- University of Newcastle, UK
- University of Oregon
- University of Surrey
- Washington University in St. Louis
- World Health Organisation

LIST OF VISITING ACADEMICS



Ms Loraine Busetto, Tranzo Scientific Center for Care and Welfare, Tilburg University, Netherlands



Dr Tracy L. Johnson, Health Care Reform Initiatives, Denver Health and Hospital Authority, USA



Prof Simon de Lusignan, University of Surrey, UK



Prof Jennie Popay, Faculty of Health and Medicine, Lancaster University, UK



Dr Wern Ee Tang, National Healthcare Group Polyclinics, Singapore



Prof Gill Rowlands, University of Newcastle, UK



Dr Arianne Elissen, Department of Health Services Research, Maastricht University, Netherlands



Sarah Simpson, EquiACT, ACT



Judith Hibbard, Health Policy Research Group, University of Oregon, USA



Gill ten Hoor, Section Applied Social Psychology, Maastricht University, Netherlands



Prof Gerjo Kok, Applied Psychology, Maastricht University, Netherlands



Prof Susanne Tittlbach, University of Bayreuth, Germany

VISITING RESEARCHER PROFILE



Gerjo Kok

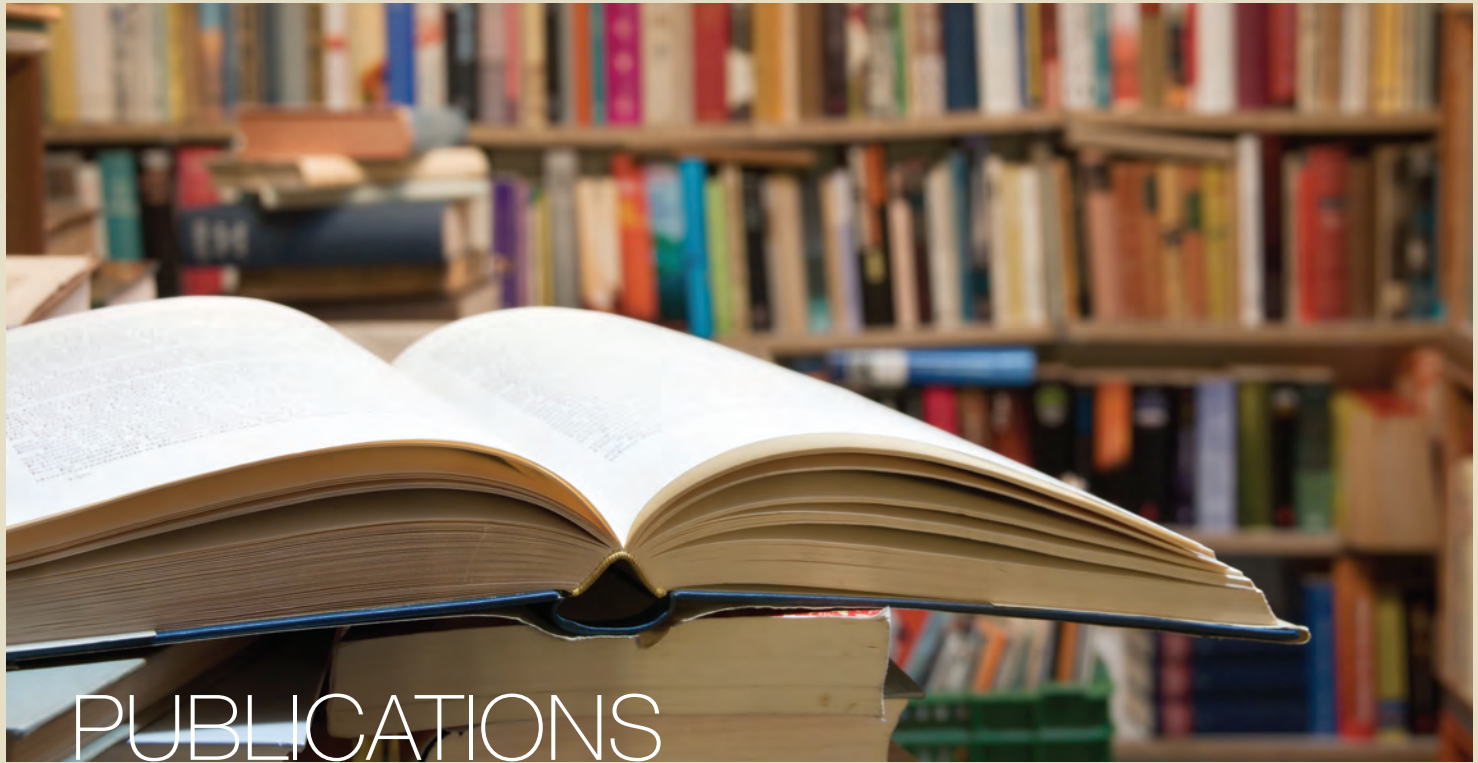
In February 2017, Gerjo Kok and Gill ten Hoor facilitated a workshop on Intervention Mapping (IM), a protocol for planning theory-based and evidence-based behaviour change programs.

Professor Gerjo Kok has a background in social psychology and became the second professor in health education and promotion in the Netherlands in 1985 (at the then 'Rijksuniversiteit Limburg', now Maastricht University). With a fiercely systematic research mind and a frugal but highly effective way with words he put simple intervention planning for health education programmes on the map in the 1980s. He worked with US counterparts (most notably Professor Lawrence Green of PRECEDE-PROCEED fame) to argue for a solid evidence-based and theory-driven health education research and development paradigm.

Gerjo retired from his health education professoriate to become one of the foundation chairs of a new Faculty of Psychology in Maastricht, eventually assuming the position of Dean. His substantive research work, however, maintained a rigorous focus on planned health education and health behaviour change. He initiated, with US and Dutch colleagues, the establishment of the 'Intervention Mapping' work which is now, as a book, in its fourth edition.

Intervention mapping is characterized by three perspectives: (1) A social ecological approach that recognizes that behaviour is a function of individuals and of the physical, social and organisational environments in which individuals live; (2) Participation of all stakeholders to ensure relevance, acceptability, contextual and cultural appropriateness, and implementability; and (3) the use of theories and evidence: problem-driven applied behavioural science refers to scientific activities that focus at changing or reducing a practical problem by using a multi-theoretical approach.

When asked by one of the participants to identify three highlights, or lessons learned, that are of particular relevance for planning interventions using IM, these were mentioned: (1) identifying the determinants of the target behaviour, taking into account the theoretical parameters while applying behaviour change methods, and making sure that the intervention is implemented as planned.



PUBLICATIONS

BOOKS & BOOK CHAPTERS

1. de Leeuw E, Green G. The Logic of Method for Evaluating Healthy Cities. In: de Leeuw E, Simos J, editors. *Healthy Cities - The Theory, Policy, and Practice of Value-Based Urban Planning* Springer: Springer; 2017. p. 463-87.
2. de Leeuw EJ. Cities and Health from the Neolithic to the Anthropocene. In: Simos J, de Leeuw E, editors. *Healthy Cities - The Theory, Policy, and Practice of Value-Based Urban Planning*: Springer; 2017. p. 3-30.
3. de Leeuw EJ. From Urban Projects to Healthy City Policies. In: de Leeuw E, Simos J, editors. *Healthy Cities - The Theory, Policy, and Practice of Value-Based Urban Planning* 2017. p. 407-37.
4. de Leeuw EJ, Lin V. Local Health Planning and Governance. In: de Leeuw E, Simos J, editors. *Healthy Cities - The Theory, Policy, and Practice of Value-Based Urban Planning*: Springer; 2017. p. 395-405.
5. de Leeuw EJ, Simos J. Healthy Cities Move to Maturity. *Healthy Cities - The Theory, Policy, and Practice of Value-Based Urban Planning*: Springer; 2017. p. 75-86.
6. de Leeuw EJ, Simos J. Wrap-Up: Values and Governance for Urban Health. In: de Leeuw E, Simos J, editors. *Healthy Cities - The Theory, Policy, and Practice of Value-Based Urban Planning*: Springer; 2017. p. 341-57.
7. de Leeuw EJ, Stevenson A, Jolley G, McCarthy S, Martin E. Healthy Cities, Urbanisation, and Healthy Islands: Oceania. *Healthy Cities - The Theory, Policy, and Practice of Value-Based Urban Planning*: Springer; 2017. p. 315-37.
8. Kaplan C, Grace R, Knight J, Anderson J, West N, Mack H, et al. 'Everybody Has Got Their Own Story': Urban Aboriginal Families and the Transition to School. In: Dockett S, Griebel W, Perry B, editors. *Families and Transition to School. International Perspectives on Early Childhood Education and Development*. Cham, Switzerland: Springer International Publishing; 2017. p. 67-82.
9. Smith SM, James A, Mitchell G, Bissett M, Zakrzewski L, Wright A, et al. Role of the interdisciplinary/multidisciplinary team. *Living with Chronic Illness and Disability Principles for Nursing Practice*. 3rd: Elsevier; 2017.

CONFERENCE PRESENTATIONS

1. Ansari S, Hosseinzadeh H, Dennis S, Zwar N. Empowering COPD patients with multi-morbidity in general practice through nurse-delivered self-management education. 2017 Primary Health Care Research Conference. Brisbane, Australia.
2. Ansari S, Hosseinzadeh H, Dennis S, Zwar N. Empowering primary care patients with COPD in the context of multi-morbidity through the pilot APCOM self-management program. European Respiratory Society 2017 International Congress. Milan, Italy.
3. Ansari S, Hosseinzadeh H, Dennis S, Zwar N. Quantitative evaluation of a novel self-management education program for COPD in the context of multi-morbidity. 22nd Congress of the Asian Pacific Society of Respiriology. Sydney, Australia.
4. Crimeen AD, de Leeuw E, Hirono K, Jalaludin B, Beer M, Freestone R, et al. Creating a Healthy Airport: Building health promoting complex infrastructure. Emerging Health Policy Research Conference (Annual). Charles Perkins Centre, University of Sydney.
5. de Leeuw EJ. Health in All Policies: why, how and who. Kuwait Healthy Cities Conference. Kuwait, Crowne Plaza.
6. de Leeuw EJ. Healthy Airports. Kuwait Healthy Cities Conference. Kuwait, Crowne Plaza.
7. de Leeuw EJ. Health in all Policies. International Top-level Forum on Engineering Science & Technology Development- Healthy China Beijing. Beijing.

8. de Leeuw EJ. La Serenissima and The Serenity: health and our environment. SPHERE International Symposium. Sydney.
9. de Leeuw EJ. Keynote, Healthy Airports. First Safety and Air Navigation Implementation Symposium (SANIS/1), International Civil Aviation Organization. Montreal.
10. de Leeuw EJ. Keynote - Synthesizing more reality or realizing more synthesis: a methodology for Healthy Cities research. Les Grandes conférences Paul-Bernard sur les inégalités sociales de santé, Le Centre Léa-Roback. Montreal.
11. de Leeuw EJ. Healthy Cities - The Theory, Policy, and Practice of Value-Based Urban Planning. 2017.
12. de Leeuw EJ. Realist synthesis for Healthy Cities evidence. Kuwait Healthy Cities Conference. Kuwait, Crowne Plaza2017.
13. Harris MF, Faruqi, Spooner C, Hermiz, Stocks N. Implementing the 5As for management of obesity in Australian general practice. North American Primary Care Research Group Annual Meeting. Montreal.
14. Harris-Roxas BF. Embedding knowledge translation in a research Centre. Research Impact Summit.
15. Harris-Roxas BF, Cipants J, Stewart G. Evaluating adaptive local partnerships for social and health service integration: developing a program logic for local Health Justice Partnerships in New South Wales, Australia. APIC1 1st Asia Pacific Conference on Integrated Care. Brisbane.
16. Harris-Roxas BF, de Leeuw E, Duckett S, Jalaludin B, Mazumdar S, Zapart S, et al. Understanding hotspots of health disadvantage: Challenges and opportunities [Workshop]. 15th World Congress on Public Health. Melbourne2017.
17. Harris-Roxas BF, Gallego G, Harris E, Lloyd J. Creating health and community in Australia's most high-density brownfield development: The Green Square Health Impact Assessment. 54th International Making Cities Liveable Conference. Santa Fe, New Mexico, U.S.A.
18. Hirono K, Haigh F, Fletcher-Lartey S, Millen E, Calalang C, Jaques K, et al. Using health impact assessment to increase wellbeing through improved stakeholder engagement in the Western Sydney Airport. WCPH 2017 15th World Congress on Public Health. Melbourne.
19. Hirono K, Haigh F, Fletcher-Lartey S, Millen E, Calalang C, Jaques K, et al. Using health impact assessment to increase wellbeing through improved stakeholder engagement in the Western Sydney Airport. SOPHIA Practitioners Conference 2017. Washington Dc.
20. Hirono K, Haigh F, Jaques K, Crimeen A, Whitten C, Beer M, et al. Integrating health into planning: A collaborative approach to creating healthier spaces. SOPHIA Practitioner Conference 2017. Washington DC.
21. Hirono K, Haigh F, Jaques K, Crimeen AD, Whitten C, Beer M, et al. Integrating health into planning: A collaborative approach to creating healthier spaces. 14th International Conference on Urban Health. Coimbra, Portugal.
22. Hirono K, Haigh F, Jaques K, de Leeuw E, Crimeen AD, Fletcher-Lartey S, et al. Improving community engagement in aerotropolis development to promote health. 14th International Conference on Urban Health. Coimbra, Portugal.
23. Hirono KT, Haigh F, Fletcher-Lartey S, Millen E, Calalang C, Jaques K, et al. Improving community engagement in aerotropolis development to promote health. WCPH 2017 10th Making Cities Liveable Conference. Brisbane.
24. Kearns RL, Hua M, Woodland L, McDonald J, Gardner K. A rapid review of the evidence on health promotion interventions for reducing waterpipe smoking: Implications for practice. World Congress on Public Health. 2017. Melbourne, Australia.
25. Kim BR, Leong GT, Loh V, Ray P, Tan L, Gallego G. A Foot in Both Worlds: A qualitative study exploring Bilingual GPs experiences of caring for CALD cancer patients. 2017. Health Beyond Research and Innovation Showcase. Campbelltown.
26. Mattsson S, Gustafsson M, Sjölander M, Svahn S, Gallego G. Who graduates from pharmacy distance education – experiences from northern Sweden. Pharmacy Education Symposium. Prato, Italy. 2017.
27. Page J, Harris E, Sainsbury P. Is there a role for an independent public service in a changing world? 15th World Congress on Public Health. 2017. Melbourne Australia.
28. Page J, Rendell E. After-hours Health access for paediatric patients at an urban Hospital Emergency Department - the experience of new migrants. GP17 - The RACGP Conference for General Practice. International Convention Centre, Sydney.
29. Prince, A., Parker, S., Harris, M. F., Liaw, S.-T., Milosevic, D., Thomas, L., Song, H., Russell, G. (2017). Application of the RE-AIM framework to evaluate e/m/telehealth interventions and inform design of a real-world intervention. 2017 Primary Health Care Research Conference, Brisbane, Australia.
30. Song, H., Dennis, S. M., Levesque, J.-F., & Harris, M. F. (2017). Ascertaining key themes in chronic disease patients' experiences of Australian primary care: Findings from practitioner and patient interviews. 2017 Health Services Research Association of Australia and New Zealand (HSRAANZ) Conference. Gold Coast, Australia.
31. Song, H., Dennis, S. M., Levesque, J.-F., & Harris, M. F. (2017). Measurement and meaningful use of patient experience in Australian primary health care. 2017 Primary Health Care Research Conference, Brisbane, Australia.
32. Spooner C, Carruthers, Dionne E, Beaulieu C, Lau J, Harris M. Data sharing in multi-site, multi-country trials. North American Primary Care Research Group Annual Meeting. Montreal.
33. Spooner C, Jayasinghe U, Faruqi, Hermiz, Stocks N, Harris MF. Predictors of weight stigma experienced by patients with obesity in disadvantaged areas of Australia. North American Primary Care Research Group Annual Meeting. Montreal.
34. Spooner CJ, Carruthers K, Harris M. Multi-site research and data sharing. Primary Health Care Research Conference. Brisbane.
35. Vasi, S., Marsh, G., Song, H., Cheng, I.-H., Lewis, V., Harris, M. F., Casey, S., Smith, M., Gunatillaka, N., Russell, G. (2017). Collaborative improvement of primary health care for people of refugee backgrounds in Australia: comparative analysis of contextual mapping in three regions. 2017 Primary Health Care Research Conference, Brisbane, Australia.
36. Welberry HJ, Comino E, Harris MF. Chronic Disease Management in NSW: Who receives a care plan through General Practice and does care planning reduce hospitalisation? 2017 Primary Health Care Research Conference. Brisbane, Australia 2017.

JOURNAL ARTICLES

1. Abbott P, Lloyd JE, Joshi C, Malera-Bandjolan K, Baldry E, McEntyre E, et al. Do programs for Aboriginal and Torres Strait Islander people leaving prison meet their health and social support needs? *Australian Journal of Rural Health*. 2018;26(1):6-13.
2. Anaf J, Baum FE, Fisher M, Harris E, Friel S. Assessing the health impact of transnational corporations: A case study on McDonald's Australia. *Globalization and Health*. 2017;13(1).
3. Ansari R, Hosseinzadeh H, Harris M, Zwar N. Conceptual Model of Diabetes Self-Management for Middle-Aged Population of Rural Area of Pakistan. *International Journal of Diabetes Research*. 2017;6(3):68-72.
4. Ansari RM, Harris M, Zwar N, Hosseinzadeh H. Psychometric Evaluation and Validation of an Urdu-version of the Summary of Diabetes Self-care Activities Measure (U-SDSCA). *Prim Health Care*. 2017;7(272):1-6.
5. Ansari RM, Harris M, Zwar N, Hosseinzadeh H. A Quantitative Research on Self-management of Type 2 Diabetes. *Prim Health Care*. 2017;7(273):1-2.
6. Ansari S, Hosseinzadeh H, Dennis S, Zwar N. Activating Primary Care COPD Patients with Multi-morbidity (APCOM) Pilot Project: Study Protocol. *npj Primary Care Respiratory Medicine*. 2017;27(12):1-5.
7. Arora A, Doan J, Martinez J, Phan C, Kolt GS, Bhole S, et al. Content analysis of nutritional information in paediatric oral health education leaflets. *BMC Pediatrics*. 2017;17(1).
8. Arora A, Manohar N, Hayen A, Bhole S, Eastwood J, Levy S, et al. Determinants of breastfeeding initiation among mothers in Sydney, Australia: Findings from a birth cohort study. *International Breastfeeding Journal*. 2017;12(1).
9. Assareh H, Achat HM, Levesque JF. Accuracy of inter-hospital transfer information in Australian hospital administrative databases. *Health Informatics J*. 2017:1460458217730866.
10. Backholer K, Hirakawa Y, Tonkin A, Giles G, Magliano DJ, Colagiuri S, et al. Development of an Australian cardiovascular disease mortality risk score using multiple imputation and recalibration from national statistics. *BMC Cardiovascular Disorders*. 2017;17(1).
11. Boydell K, Dew AH, Hodgins M, Lincoln M, Bundy A, Gallego G, et al. How can researchers and policy makers work together? Deliberative dialogues in Canada and Australia. *Journal of Disability Policy Studies*. 2017.
12. Browne J, de Leeuw E, Gleeson D, Adams K, Atkinson P, Hayes R. A network approach to policy framing: A case study of the National Aboriginal and Torres Strait Islander Health Plan. *Social Science and Medicine*. 2017; 172:10-18.
13. Callander EJ, Corscadden L, Levesque JF. Out-of-pocket healthcare expenditure and chronic disease-do Australians forgo care because of the cost? *Australian Journal of Primary Health*. 2017;23(1):15-22.
14. Castino MR, Baker-Andresen D, Ratnu VS, Shevchenko G, Morris KV, Bredy TW, et al. Persistent histone modifications at the BDNF and Cdk-5 promoters following extinction of nicotine-seeking in rats. *Genes, Brain and Behavior*. 2018;17(2):98-106.
15. Cave B. A contribution to the conceptualisation of quality in impact assessment. *Environmental Impact Assessment Review*. 2017.
16. Cheng SWM, Alison J, Dennis S, Stamatakis E, Spencer L, McNamara R, et al. A behaviour change intervention to reduce sedentary time in people with chronic obstructive pulmonary disease: protocol for a randomised controlled trial. *Journal of Physiotherapy*. 2017;63(3):182.
17. Chipperfield JO, Barr ML, Steel DG. Split Questionnaire Designs: collecting only the data that you need through MCAR and MAR designs. *Journal of Applied Statistics*. 2017:1-11.
18. Chong S, Ding D, Byun R, Comino E, Bauman A, Jalaludin B. Lifestyle changes after a diagnosis of type 2 diabetes. *Diabetes Spectrum*. 2017;30(1):43-50.
19. Chowdhury, HA, Fatema K, Hossain S, Natasha K, Khan T, Akter J, ... & Ali L. Knowledge and self-care practice regarding diabetes among type 2diabetics: experience from a non-profit hospital chain in Bangladesh. *International Journal of Diabetes in Developing Countries*. 2017;1-8.
20. Clark RG, Barr M. A blended link approach to relative risk regression. *Statistical Methods in Medical Research*. 2017:096228021769817-.
21. Cohen L, Kobayashi S, Simic M, Dennis S, Refshauge K, Pappas E. Non-radiographic methods of measuring global sagittal balance: A systematic review. *Scoliosis and Spinal Disorders*. 2017;12(1).
22. Comino E, Elcombe E, Jalaludin B, Kemp L, Wright D, Harris MF, et al. Describing the general health of an urban cohort of Aboriginal children from birth to seven years in Sydney Australia. *Medical Journal of Australia*. 2017;207(1):37-8.
23. Comino EJ, Elcombe E, Jalaludin BB, Kemp LA, Wright D, Harris MF. The general health of a cohort of aboriginal children (0-7 years) in Sydney. *Medical Journal of Australia*. 2017;207(1):37-8.
24. Coorey GM, Neubeck L, Usherwood T, Peiris D, Parker S, Lau AYS, et al. Implementation of a consumer-focused eHealth intervention for people with moderate-to-high cardiovascular disease risk: Protocol for a mixed-methods process evaluation. *BMJ Open*. 2017;7(1).
25. Corscadden L, Levesque JF, Lewis V, Breton M, Sutherland K, Weenink JW, et al. Barriers to accessing primary health care: Comparing Australian experiences internationally. *Australian Journal of Primary Health*. 2017;23(3):223-8.
26. Crabtree BF, Miller WL, Gunn JM, Hogg WE, Scott CM, Levesque JF, et al. Uncovering the wisdom hidden between the lines: The Collaborative Reflexive Deliberative Approach. *Fam Pract*. 2017.
27. de Leeuw E. A tribute to Dr Halfdan Mahler, 1923–2016. *Health Promotion International*. 2017;32(1):1-.
28. De Leeuw E. Engagement of Sectors Other than Health in Integrated Health Governance, Policy, and Action. *Annual Review of Public Health*. 2017; 38:329-49.

29. De Leeuw E. Healthy Cities are back! (They were never gone). *Health Promotion International*. 2017;32(4):606-9.
30. de Leeuw EJ, Di Guggiero E, Potvin L, Allegrante JP, Dawson A, Verweij M, et al. Ottawa Statement from the Sparking Solutions Summit on Population Health Intervention Research. *Canadian Journal of Public Health*. 2017:494-6.
31. de Leeuw EJ, Khayat-zadeh-Mahani A, Labonté R, Ruckert A. Using sustainability as a collaboration magnet to encourage multi-sector collaborations for health. *Global health promotion*. 2017.
32. Dennis S. From organisations to people: Improving the prevention and management of long-term conditions in Australian primary health care. *Australian Journal of Primary Health*. 2017;23(5):i-ii.
33. Dennis S, Watts I, Pan Y, Britt H. Who do Australian general practitioners refer to physiotherapy? *Australian Family Physician*. 2017;46(6):421-6.
34. Englund C, Gustafsson M, Gallego G. Pharmacy Students' Attitudes and Perceptions of "Virtual Worlds" as an Instructional Tool for Clinical Pharmacy Teaching. *Pharmacy*. 2017;5(4):5-.
35. Essling E, Gallego G, Mattsson S. Why do health students choose distance education, specifically in a web-based online format? Evidence from pharmacy education in Northern Sweden. *European Journal of Open, Distance and e-Learning*. 2017.
36. Fatema K, Hossain S, Natasha K, Chowdhury HA, Akter J, Khan T, & Ali L. Knowledge attitude and practice regarding diabetes mellitus among Nondiabetic and diabetic study participants in Bangladesh. *BMC Public Health*. 2017;17(1), 364.
37. Friesen EL, Comino EJ. Research culture and capacity in community health services: Results of a structured survey of staff. *Australian Journal of Primary Health*. 2017;23(2):123-31.
38. Gallego G, Dew AH, Lincoln M, Bundy A, Chedid R, Bulkeley K, et al. Access to therapy services for people with disability in rural Australia: a carers' perspective. *Health & Social Care in the Community*. 2017.
39. Grace R, Elcombe E, Knight J, McMahon C, McDonald J, Comino E. Early childhood development over time for a cohort of Australian aboriginal children living in an urban environment. *Australian Journal of Educational and Developmental Psychology*. 2017; 15:35-52.
40. Gray J, Hoon EA, Afzali HHA, Spooner C, Harris MF, Karnon J. Is the Counterweight Program a feasible and acceptable option for structured weight management delivered by practice nurses in Australia? A mixed-methods study. *Australian Journal of Primary Health*. 2017;23(4):348-63.
41. Greer SL, Bekker M, De Leeuw E, Wismar M, Helderman JK, Ribeiro S, et al. Policy, politics and public health. *European Journal of Public Health*. 2017; 27:40-3.
42. Gu Y, Dennis SM. Are falls prevention programs effective at reducing the risk factors for falls in people with type-2 diabetes mellitus and peripheral neuropathy: A systematic review with narrative synthesis. *Journal of Diabetes and its Complications*. 2017;31(2):504-16.
43. Gustafsson M, Englund C, Gallego G. The description and evaluation of virtual worlds in clinical pharmacy education in Northern Sweden. *Currents in Pharmacy Teaching and Learning*. 2017;9(5):887-92.
44. Gustafsson M, Mattsson S, Gallego G. Students' Satisfaction with a Web-Based Pharmacy Program in a Re-Regulated Pharmacy Market. *Pharmacy*. 2017;5(3):47-.
45. Gustafsson M, Mattsson S, Wallman A, Gallego G. Pharmacists' satisfaction with their work: Analysis of an alumni survey. *Research in Social and Administrative Pharmacy*. 2017.
46. Harris MF, Parker SM, Litt J, Van Driel M, Russell G, Mazza D, et al. An Australian general practice-based strategy to improve chronic disease prevention, and its impact on patient reported outcomes: Evaluation of the preventive evidence into practice cluster randomised controlled trial. *BMC Health Services Research*. 2017;17(1).
47. Harris-Roxas B, O Mullane M. Health impact assessment for health promotion, education and learning. *Global Health Promotion*. 2017;24(2):3-4.
48. Harris-Roxas B, O Mullane M. L'évaluation d'impact sur la santé pour la promotion de la santé, l'éducation pour la santé et l'apprentissage. *Global Health Promotion*. 2017;24(2):53-4.
49. Harris-Roxas B, O Mullane M. La evaluación del impacto en la salud para la promoción, la educación y el aprendizaje en este campo. *Global Health Promotion*. 2017;24(2):78-9.
50. Haynes A, Brennan S, Redman S, Williamson A, Makkar SR, Gallego G, et al. Policymakers' experience of a capacity-building intervention designed to increase their use of research: A realist process evaluation. *Health Research Policy and Systems*. 2017;15(1).
51. Hyun KK, Redfern J, Patel A, Brieger D, Sullivan D, Harris M, et al. Gender inequalities in cardiovascular risk factor assessment and management in primary healthcare. *Heart*. 2017.
52. Janssen A, Brunner M, Keep M, Hines M, Nagarajan SV, Kielly-Carroll C, et al. Interdisciplinary eHealth practice in cancer care: A review of the literature. *International Journal of Environmental Research and Public Health*. 2017;14(11).
53. Jaques K, Haigh F, Thorn M. A community grounded HIA: The benefits of conducting a HIA during the Airds Bradbury Estate Redevelopment. *Chronicles of Health Impact Assessment*. 2017;2(1).
54. Lakhan P, Askew D, Harris MF, Kirk C, Hayman N. Understanding health talk in an urban Aboriginal and Torres Strait Islander primary healthcare service: A cross-sectional study. *Australian Journal of Primary Health*. 2017;23(4):335-41.
55. Lane R, Halcomb E, McKenna L, Zwar N, Naccarella L, Davies GP, et al. Advancing general practice nursing in Australia: Roles and responsibilities of primary healthcare organisations. *Australian Health Review*. 2017;41(2):127-32.
56. Levesque JF, Harris MF, Scott C, Crabtree B, Miller W, Halma LM, et al. Dimensions and intensity of inter-professional teamwork in primary care: evidence from five international jurisdictions. *Fam Pract*. 2017.
57. Levesque JF, O'Dowd JJM, Ni Shé ÉM, Weenink JW, Gunn J. Scoping of models to support population-based regional health planning and management: Comparison with the regional operating model in Victoria, Australia. *Australian Health Review*. 2017;41(2):162-9.

58. Levesque JF, Sutherland K. What role does performance information play in securing improvement in healthcare? a conceptual framework for levers of change. *BMJ Open*. 2017;7(8): e014825.
59. Lévesque JF, Sutherland K. Public reporting of mortality rates for hospitalized Medicare patients. *Annals of Internal Medicine*. 2017;166(1):75.
60. Liaw ST, Kearns R, Taggart J, Frank O, Lane R, Tam M, et al. The informatics capability maturity of integrated primary care centres in Australia. *International Journal of Medical Informatics*. 2017; 105:89-97.
61. Liaw ST, Taggart J, Tam M, Knight A, Harris M, Duggan J, et al. Integrated Healthcare Homes & Neighbourhoods: governance, clinical, managerial & evaluation matters. *International Journal of Integrated Care*. 2017;17(3):43-.
62. Litterbach EK, Russell CG, Taki S, Denney-Wilson E, Campbell KJ, Laws RA. Factors Influencing Engagement and Behavioral Determinants of Infant Feeding in an mHealth Program: Qualitative Evaluation of the Growing Healthy Program. *JMIR Mhealth Uhealth*. 2017;5(12):e196.
63. Lloyd JE, McEntyre E, Baldry E, Trofimovs J, Indig D, Abbott P, et al. Aboriginal and non-aboriginal Australian former prisoners' patterns of morbidity and risk of hospitalisation. *International Journal for Equity in Health*. 2017;16(1).
64. Lyle D, Saurman E, Kirby S, Jones D, Humphreys J, Wakerman J. What do evaluations tell us about implementing new models in rural and remote primary health care? Findings from a narrative analysis of seven service evaluations conducted by an Australian Centre of Research Excellence. *Rural and Remote Health*. 2017;17(3).
65. McDonald J, Ward B, Lane R, Kearns R, Powell Davies G, Fuller J, et al. How are co-located primary health care centres integrating care for people with chronic conditions? *International Journal of Integrated Care*. 2017;17(3):51-.
66. Mitchell GK, Senior HE, Rhee JJ, Ware RS, Young S, Teo PCK, et al. Using intuition or a formal palliative care needs assessment screening process in general practice to predict death within 12 months: A randomised controlled trial. *Palliative Medicine*. 2018;32(2):384-94.
67. Ou CHK, Wong ST, Levesque JF, Saewyc E. Healthcare needs and access in a sample of Chinese young adults in Vancouver, British Columbia: A qualitative analysis. *International Journal of Nursing Sciences*. 2017;4(2):173-8.
68. Patel B, Peiris D, Usherwood T, Li Q, Harris M, Panaretto K, et al. Impact of sustained use of a multifaceted computerized quality improvement intervention for cardiovascular disease management in Australian primary health care. *Journal of the American Heart Association*. 2017;6(10).
69. Pineault R, Borgès Da Silva R, Provost S, Fournier M, Prud'homme A, Levesque JF. Do Gender-Predominant Primary Health Care Organizations Have an Impact on Patient Experience of Care, Use of Services, and Unmet Needs? *Inquiry: a journal of medical care organization, provision and financing*. 2017;54.
70. Proudfoot J, Clarke J, Gunn J, Fletcher S, Sanatkar S, Wilhelm K, et al. A Web-Based Public Health Intervention to Reduce Functional Impairment and Depressive Symptoms in Adults with Type 2 Diabetes (The Springboard Trial): Randomized Controlled Trial Protocol. *JMIR Res Protoc*. 2017;6(8):e145.
71. Russell GM, Miller WL, Gunn JM, Levesque JF, Harris MF, Hogg WE, et al. Contextual levers for team-based primary care: lessons from reform interventions in five jurisdictions in three countries. *Fam Pract*. 2017.
72. Rütten A, Frahsa A, Abel T, Bergmann M, de Leeuw E, Hunter D, et al. Co-producing active lifestyles as whole-system-approach: theory, intervention and knowledge-to-action implications. *Health Promotion International*. 2017.
73. Schütze H, Chin M, Weller D, Harris MF. Patient, general practitioner and oncologist views regarding long-term cancer shared care. *Fam Pract*. 2017.
74. Schütze H, Jackson Pulver L, Harris M. What factors contribute to the continued low rates of Indigenous status identification in urban general practice? - A mixed-methods multiple site case study. *BMC Health Services Research*. 2017;17(1):1-12.
75. Seidman Z, McNamara R, Wootton S, Leung R, Spencer L, Dale M, et al. People attending pulmonary rehabilitation demonstrate a substantial engagement with technology and willingness to use telerehabilitation: a survey. *Journal of Physiotherapy*. 2017;63(3):175-81.
76. Short K, Eadie P, Descallar J, Comino E, Kemp L. Longitudinal vocabulary development in Australian urban Aboriginal children: Protective and risk factors. *Child: Care, Health and Development*. 2017;43(6):906-17.
77. Sjölander M, Gustafsson M, Gallego G. Doctors' and nurses' perceptions of a ward-based pharmacist in rural northern Sweden. *International Journal of Clinical Pharmacy*. 2017;39(4):953-9.
78. Smith CA, Chang E, Gallego G, Balneaves LG. An education intervention to improve health literacy and decision making about supporting self-care among older Australians: A study protocol for a randomised controlled trial. *Trials*. 2017;18(1).
79. Spooner C, Lavey L, Mukuka C, Eames-Brown R. Multi-institution Research Centers: Planning and Management Challenges. *Journal of Research Administration*. 2017;47(2):32-48.
80. Sutherland K, Hindmarsh D, Moran K, Levesque JF. Disparities in experiences and outcomes of hospital care between aboriginal and non-aboriginal patients in New South Wales. *Medical Journal of Australia*. 2017;207(1):17-8.
81. Sutherland K, Levesque JF, Chessman J. Risk-adjusted hospital mortality rates for stroke: Evidence from the Australian stroke clinical registry (AuSCR). *Medical Journal of Australia*. 2017;207(7):315-e1.
82. Taki S, Lymer S, Russell CG, Campbell K, Laws R, Ong KL, et al. Assessing User Engagement of an mHealth Intervention: Development and Implementation of the Growing Healthy App Engagement Index. *JMIR Mhealth Uhealth*. 2017;5(6): e89.
83. van Eyk H, Harris E, Baum F, Delany-Crowe T, Lawless A, MacDougall C. Health in all policies in south Australia—did it promote and enact an equity perspective? *International Journal of Environmental Research and Public Health*. 2017;14(11).



84. Yu S, Van Gool K, Edwards K, Kirby S, Gardner K, Robinson L, et al. The business of integrated care: implementing new models of care in a fee-for-service setting. *International Journal of Integrated Care*. 2017.
85. Zwar N, Hermiz O, Halcomb E, Davidson P, Bodenheimer T. Improving blood pressure control in general practice: A pilot study of the ImPress intervention. *Australian Family Physician*. 2017;46(5):306-11.

REPORTS

1. Crimeen A, Haigh FA. Submission to Environmental Impact Assessment Improvement Project Guideline 6- Draft Community and Stakeholder Engagement. UNSW, Sydney. 2017.
2. Faruqi N, Thomas, Findlay, Parker S, Harris-Roxas B, Taggart J, et al. Diabetes management in the community: An Evidence Check rapid review brokered by the Sax Institute for the NSW Agency for Clinical Innovation. Sydney; 2017.
3. Hirono K, Haigh FA, Jaques K, Crimeen A. Integrating Health Considerations into Wollondilly Shire Council Planning Processes. UNSW, Sydney. 2017.
4. Hirono K, Haigh FA, Jaques K, Fletcher-Lartey S, Millen L, Calalang C. Is anyone listening? Health impact assessment of the Western Sydney Airport community engagement process. UNSW, Sydney. 2017.
5. Smith C, Cheng E, Gallego G. An educational intervention to improve health literacy and decision making about supporting self-care and decision making among older Australians: a randomised controlled trial. UNSW, Sydney. 2017.
6. Taggart J, Yu H, Harris M. Cancer Shared e-Care Plan Report. UNSW, Sydney. 2017.
7. Zapart S, Silk J, Harris-Roxas BF, de Leeuw E. Locational Disadvantage: Program Logic. Sydney: Centre for Primary Health Care and Equity; 2017.

THESES

1. Haigh FA. A Critical Realist Approach to Integrating Human Rights into Health Impact Assessment. PHD UNSW Sydney
2. Williams AM. Conceptualising self-management: patient engagement in the management of their chronic illness. PHD UNSW Sydney
3. El-Haddad, N. The influence interaction between of ethnicity and on health literacy for weight management among obese Arabic-speaking immigrants in Australian primary health care. PHD UNSW Sydney



FINANCIAL

CENTRE FOR PRIMARY HEALTH CARE AND EQUITY

Statement of Financial Performance for the Year Ended 31 December 2017

	Notes	2017	2016
		\$000	\$000
Revenue			
Research Revenue		\$1,676	\$2,071
Consulting/Commercial Activities		\$9	\$34
Other Research Revenue		\$1,704	\$1,179
UNSW Contributions		\$233	\$404
UNSW Medicine Contributions	ii/iii	\$752	\$624
Other Revenue		-\$1	\$174
Total Revenue		\$4,373	\$4,486
Expenses			
People Costs, oncosts & other Staff Costs		\$3,626	\$3,773
Scholarship Stipends		\$31	\$77
Contract & Consulting Services		\$69	\$269
Consumables		\$24	\$12
Travel		\$88	\$69
Equipment < than \$5,000		\$16	\$1
Other Expenses		\$89	\$91
Total Expenses		\$3,943	\$4,292
Net Result before Depreciation		\$430	\$194
Depreciation		\$0	\$3
Net Result after Depreciation		\$430	-\$191

Notes to the Statement of Financial Performance

- i) The financial statement is prepared on an accrual basis for the year ended 31 December 2017
- ii) The Centre (CPHCE) also recognises in-kind contributions provided to it by UNSW that are not brought to account in the Statement of Financial Performance - this includes space occupied at Level 3 Building G27 - AGSM, Randwick.
- iii) Includes contribution to salaries of 8 (2016 - 8) CPHCE staff

Chief Financial Officer's (or Delegate) Certificate

I certify that the accounts and records on which this statement has been prepared were maintained in accordance with Australian Accounting Standards.

Name : Kieran McGeachie, CA

Signature:

Date: 04/06/2018



CONTACT US

Main Campus

Executive Director: Professor Mark Harris
CPHCE, Level 3, AGSM Building,
UNSW SYDNEY NSW 2052
Tel: +61 2 9385 8384 **Fax:** +61 2 9385 8404
Email: m.f.harris@unsw.edu.au

Director: A/Prof Freddy Sitas
CPHCE, Level 3, AGSM Building,
UNSW SYDNEY NSW 2052
Tel: +61 2 9385 8401 **Fax:** +61 2 9385 8404
Email: f.sitas@unsw.edu.au

South Eastern Sydney Research Collaboration Hub (SEaRCH)

Director: Dr Ben Harris-Roxas
CPHCE, Level 3, AGSM Building,
UNSW SYDNEY NSW 2052
Tel: +61 2 9385 1508 **Fax:** +61 2 9385 8404
Email: b.harris-roxas@unsw.edu.au

Off campus research units

Centre for Health Equity Training Research and Evaluation (CHETRE)

Director: Prof Evelyne de Leeuw
Locked Mail Bag 7103,
Liverpool BC NSW 1871
Tel: +61 2 8738 9310 **Fax:** +61 2 9602 8052
Email: mary.knopp@sswahs.nsw.gov.au

General Practice Unit

Director: Professor Siaw-Teng Liaw
Locked Mail Bag 7103,
Liverpool BC NSW 1871
Fairfield NSW 1860
Tel: +61 2 98738 9343
Email: siaw@unsw.edu.au

Health Equity Research and Development Unit (HERDU)

Director: A/Prof Jane Lloyd
SLHD, Level 2, Marsden St, Camperdown
Tel: +61 2 9515 1234
Email: j.lloyd@unsw.edu.au

Please direct any inquiries regarding the Annual Report to
A/Prof Freddy Sitas at f.sitas@unsw.edu.au.

Further information about the Centre for Primary Health Care and Equity
can be found at www.cphce.unsw.edu.au.

