



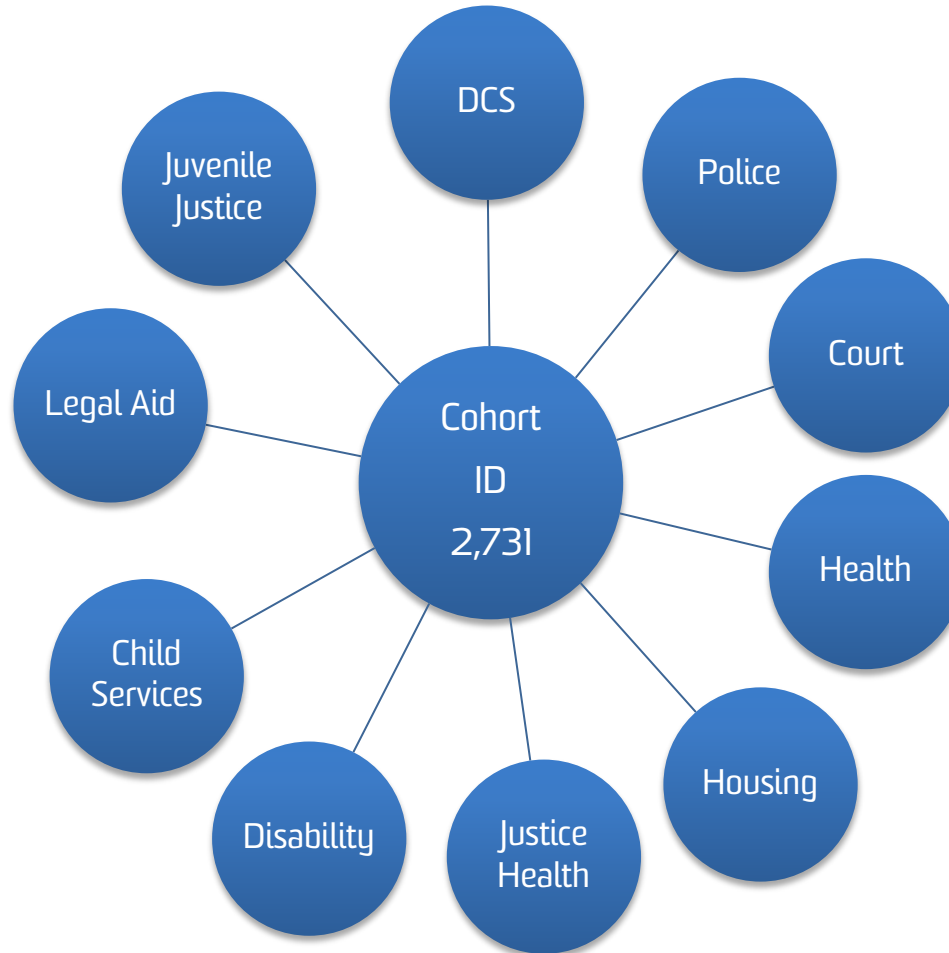
Never Stand Still

The \$5.5 million 22 year old: how we have created complex needs and what to do about it

Ian Webster Oration 2013

Presented by Professor Eileen Baldry

SQL server, relational dataset



Case Study 9 Casey: Summary of agency contacts over lifecourse

Agency	Service Type	No of contacts
Community Services		
	Notifications	26
	Out-of-home care days	1169
Police		
	Incidents	356
	Custody	81
	Charges	68
Juvenile Justice		
	Conferencing	1
	Community orders	3
	Custody	419
Corrective Services		
	Community orders	3
	Custody days	185
	Programs	
Courts		
	Finalised matters	104
Legal Aid		
	Legal advice	11
	Duty Solicitor work	30
	Case	24
Health		
	Hospital admissions	67
	Days admitted hospital	270
	Pharmaceutical Drugs of Addiction Scheme	0
	Mental health programs	
Justice Health		
	Assessments	37
	Appointments	270
	Hospital admission	5

Casey	<10	10 to 15	16 to 18	19 to 21	22 to 25	26 to 35	36 to 45	46 to 55	Total Cost
Police	\$ -	\$ 303,239.46	\$ 318,870.36	\$ -	\$ -	\$ -	\$ -	\$ -	\$ 622,109.82
DoCS	\$ -	\$ 44,607.55	\$ 150,038.61						\$ 194,646.16
DCS			\$ 60,540.16	\$ -	\$ -	\$ -	\$ -	\$ -	\$ 60,540.16
DJJ		\$ 215,571.40	\$ 262,486.08	\$ -					\$ 478,057.48
Housing	\$ -	\$ -	\$ -	\$ -	\$ -	\$ -	\$ -	\$ -	\$ -
Health	\$ -	\$ 111,631.67	\$ 174,290.01	\$ -	\$ -	\$ -	\$ -	\$ -	\$ 285,921.68
Courts	\$ -	\$ 30,739.04	\$ 69,585.93	\$ -	\$ -	\$ -	\$ -	\$ -	\$ 100,324.98
Legal Aid	\$ -	\$ 12,930.92	\$ 14,840.63	\$ -	\$ -	\$ -	\$ -	\$ -	\$ 27,771.55
PHDAS	\$ -	\$ -	\$ -	\$ -	\$ -	\$ -	\$ -	\$ -	\$ -
Centrelink	\$ -	\$ 33,832.53	\$ 43,608.50	\$ 52,473.96	\$ -	\$ -	\$ -	\$ -	\$ 129,914.99
Justice Health		\$ 25,046.03	\$ 50,592.97	\$ -	\$ -	\$ -	\$ -	\$ -	\$ 75,639.00
ADHC			\$ 589,770.00	\$ 2,950,598.00					\$ 3,540,368.00
Total	\$ -	\$ 777,598.60	\$ 1,734,623.25	\$ 3,003,071.96	\$ -	\$ -	\$ -	\$ -	\$ 5,515,293.81

Pathways: iterative, layered, looping, cycling, compounding



Figure 1 The Complex Needs Web

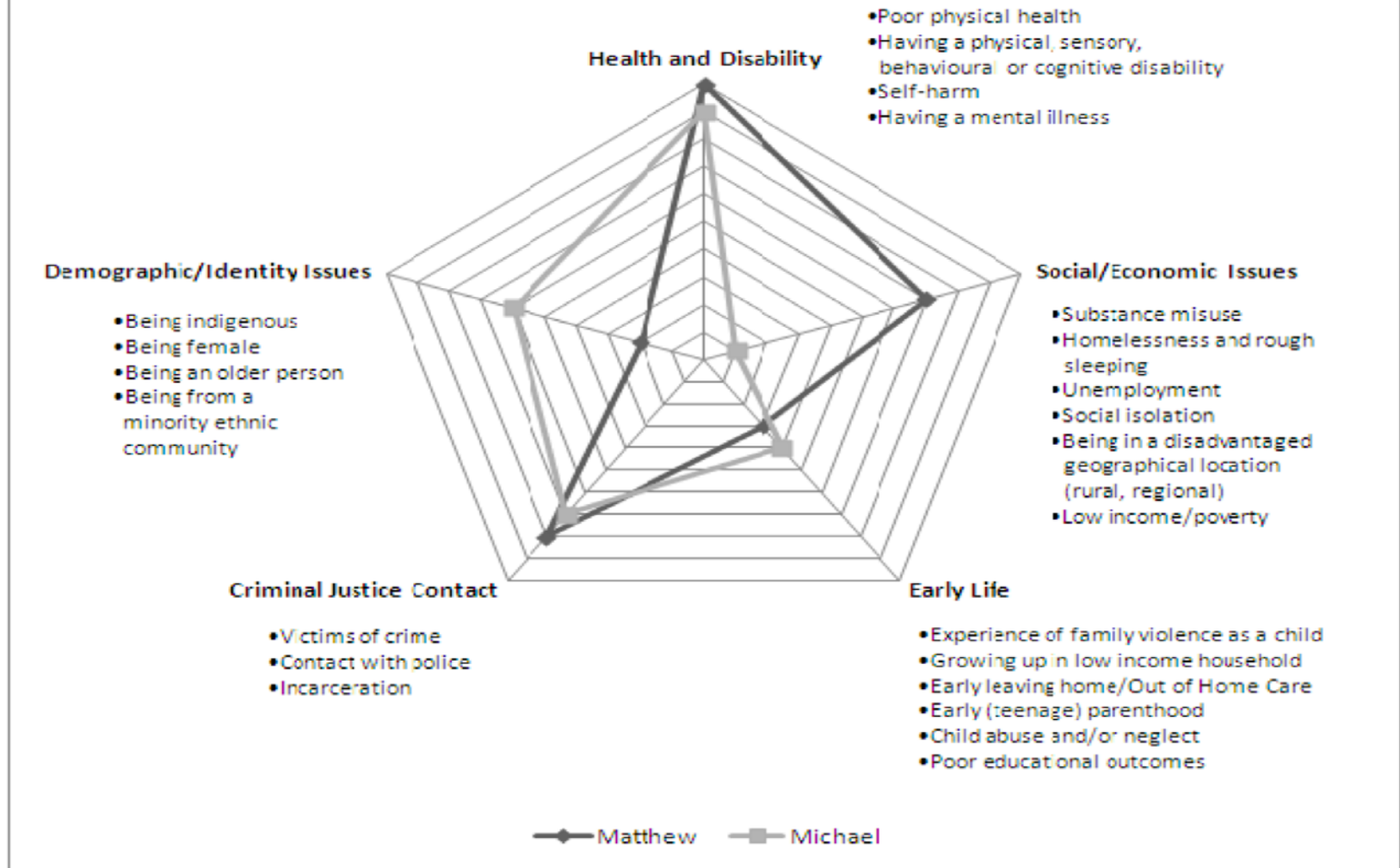


Figure 1 captures the breadth, depth and interlocking nature of disadvantageous factors that coalesce to create ‘complex needs’. The dimensional complexity of the interactions created by the compounding of the factors is illustrated by mapping the case studies of ‘Matthew’ and ‘Michael’. (Figure by Han Xu)

Average age First police contact, conviction and custodial episode

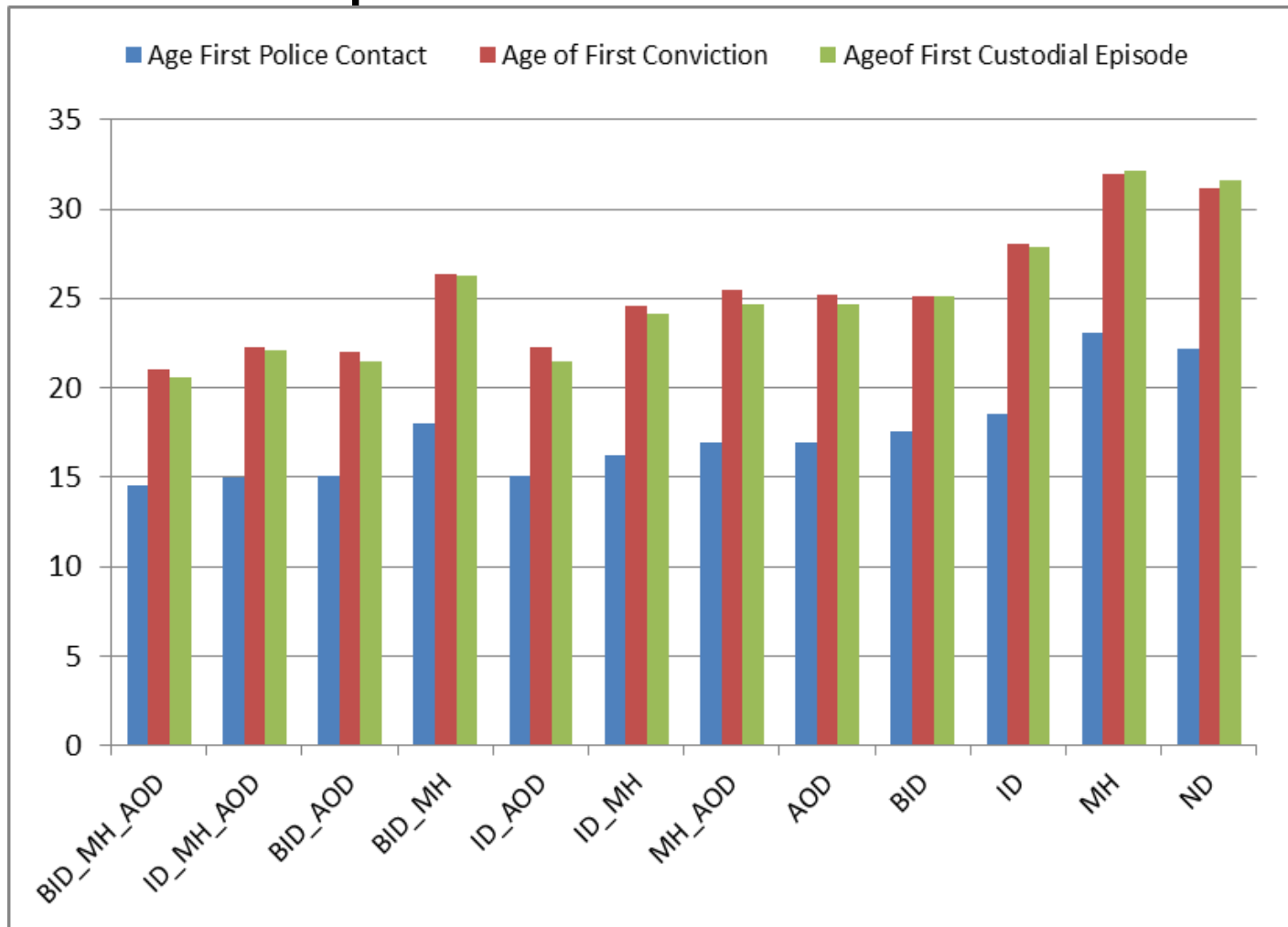


Figure 1 The Complex Needs Web

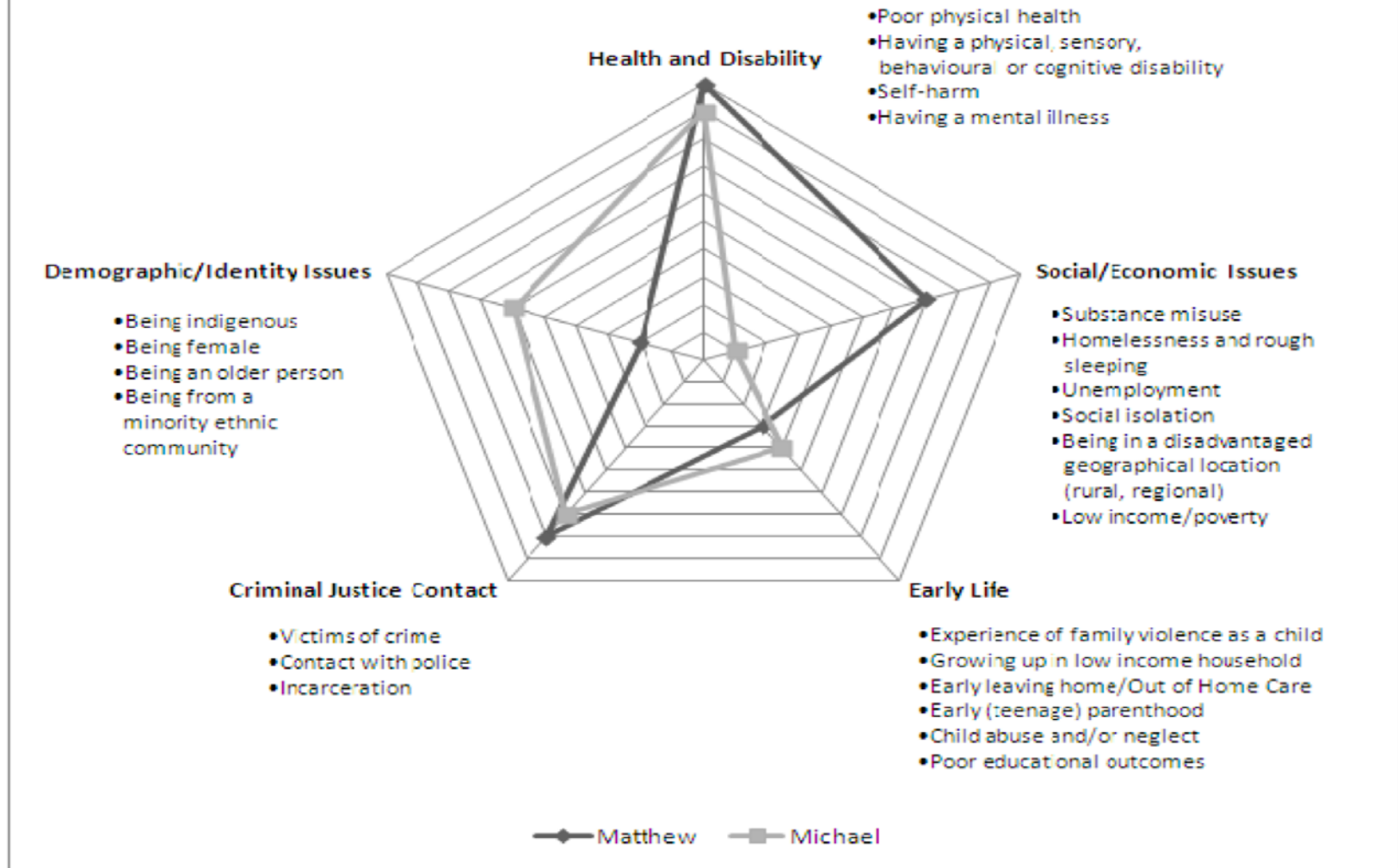


Figure 1 captures the breadth, depth and interlocking nature of disadvantageous factors that coalesce to create ‘complex needs’. The dimensional complexity of the interactions created by the compounding of the factors is illustrated by mapping the case studies of ‘Matthew’ and ‘Michael’. (Figure by Han Xu)