

# ADVANCED APPROACHES IN HEALTH IMPACT ASSESSMENT WORKSHOP

## Predictive Modelling Tools

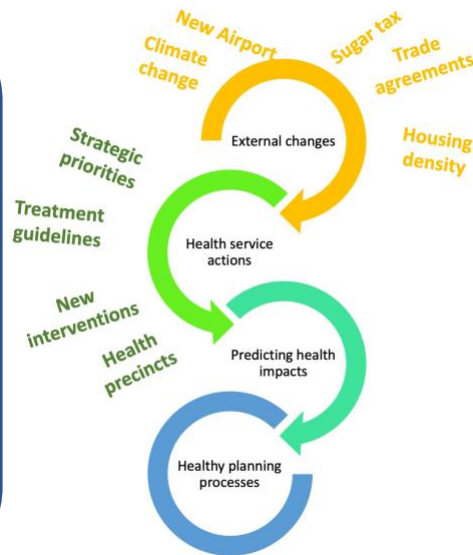
When: Thursday 4<sup>th</sup> April 2019

Time: 10-12 (light lunch and networking after)

Where: Boardroom, Level 1, Ingham Institute for Applied Medical Research, 1 Campbell Street, Liverpool NSW 2170

RSVP: <https://bit.ly/2UjxqdQ>

Contact: Fiona Haigh [f.haigh@unsw.edu.au](mailto:f.haigh@unsw.edu.au)



Health Impact Assessment (HIA) is a well-established approach that supports decision making and planning processes with information about the potential effects of new policies, plans and projects on health and health equity. HIA provides evidence-based recommendations on how to maximise health benefits, minimise potential harms and support health equity.

With increasing computing power, data availability, and evidence of exposure and effect; the ability to predict health impacts of policies, plans and programs has steadily increased over the past decade.

This workshop will explore current HIA practices focusing on the use of predictive modelling tools to support HIA processes. The seminar will:

- Investigate how Health Impact Assessment can be used to maximise its contribution to decision making processes to improve health and wellbeing outcomes
- Explore the application of predictive modelling approaches internationally and in Australia for health planning
- Identify opportunities and future directions for collaboration

## Keynote speakers

### **Dr Odile Mekel,**

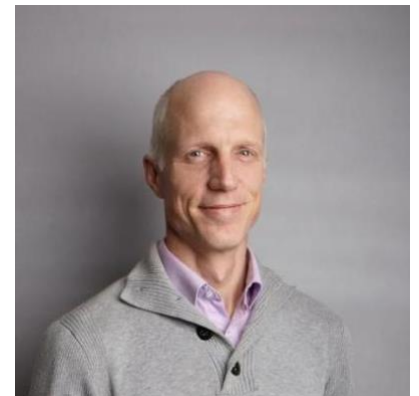
Head of Division Health Data and Assessments, Campus Development, head of the unit Health Assessments and Forecasting at the NRW Centre for Health (LZG.NRW), Bochum, Germany.

Odile is an established expert in health risk assessment and health impact assessment. Her main interests are health impact assessment including quantitative approaches, and its integration into local and regional healthy public policies. Odile is the principal investigator of numerous EU funded projects on risk assessment and health impact assessment (HIA). She is an advisor to the World Health Organization (WHO) and the EU Joint Research Centre (Ispra) on exposure assessment issues. Odile chairs the interdisciplinary German working group on probabilistic exposure and risk assessment, and is the president of the section Health Impact Assessment of the European Public Health Association (EUPHA).



### **Professor Lennert Veerman**

Professor of Public Health, Griffith University, School of Medicine  
Chief Investigator, CRE in Healthy, Liveable Communities,  
Researcher, CRE Policy Research on Obesity and Food Systems  
Lennert is a Dutch-trained public health physician specialised in predictive modelling and cost-effectiveness analysis, with a focus on physical activity, diet and obesity. He has published on a broad range of topics including health impact assessment, obesity and other risk factors for chronic disease, philosophy of science, epidemiological modelling, burden of disease studies, and the cost-effectiveness of prevention. Part of this work involves collaboration with other research groups across Australia and overseas, and with sectors other than health care; sectors that are key to improving population exposure to many of the major determinants of health.



## Presentations and discussion

Health Impact Assessment in Australia

International developments in tools for predicting health impacts

Local and international examples of application

Panel discussion – how can predictive modelling tools and HIA support health planning processes?



Centre for Primary  
Health Care and  
Equity

